

LOC I-JAX <b>110.7</b>	APP CRS <b>077°</b>	Rwy Ldg TDZE <b>30</b> Apt Elev <b>30</b>
---------------------------	------------------------	---

# ILS Y RWY 8 (SA CAT I)

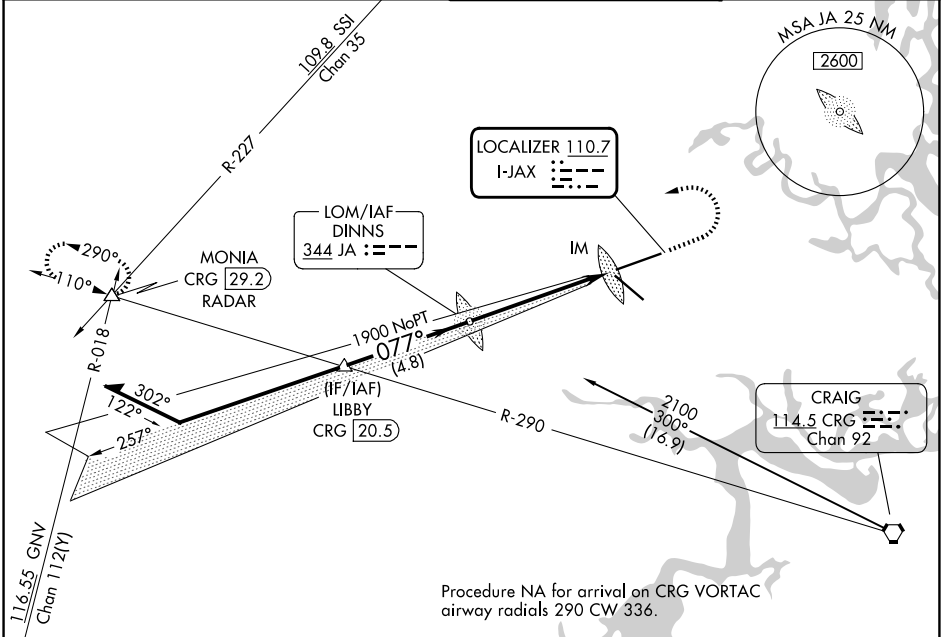
JACKSONVILLE INTL (JAX)

Requires specific OPSPEC, MSPEC, or LOA approval.

ALSF-2

MISSED APPROACH: Climb to 1000 then climbing left turn to 3000 on heading 250° and on CRG VORTAC R-290 to MONIA INT/CRG 29.2 DME/RADAR and hold.

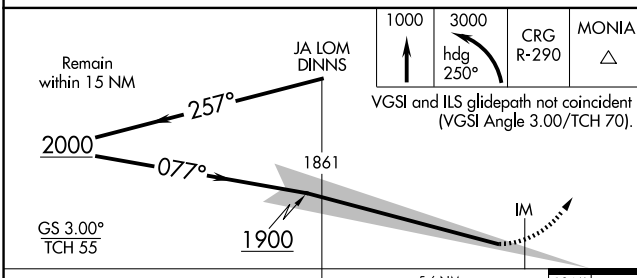
D-ATIS <b>125.85</b>	JACKSONVILLE APP CON <b>119.0 269.9</b>	JACKSONVILLE TOWER <b>118.3 317.7</b>	GND CON <b>121.9 348.6</b>
-------------------------	--	--	-------------------------------



SE-3, 14 MAY 2026 to 11 JUN 2026

SE-3, 14 MAY 2026 to 11 JUN 2026

ELEV 30	TDZE 30
---------	---------



110.7 LOCALIZER I-JAX

114.5 CRG CRAIG Chan 92

18000 X 150

701 X 150

TWR

CATEGORY	A	B	C	D
S-ILS 8	RA 175/14 150 DA 180			

**SA CATEGORY I - SPECIAL AIRCREW & AIRCRAFT CERTIFICATION REQUIRED**

REIL Rwy 32  
TDZL/RCLS Rwys 8, 14, and 26  
HIRL Rwys 8-26 and 14-32