

VORTAC CRG 114.5 Chan 92	APP CRS 316°	Rwy Ldg TDZE 7701 24 Apt Elev 30
--	------------------------	--

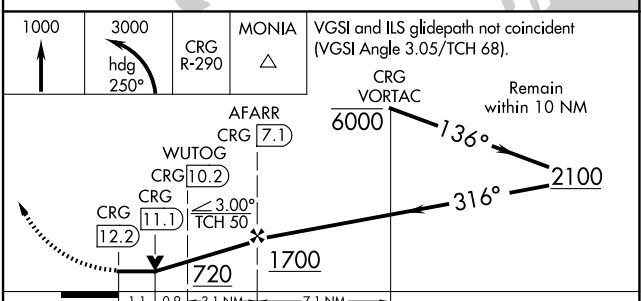
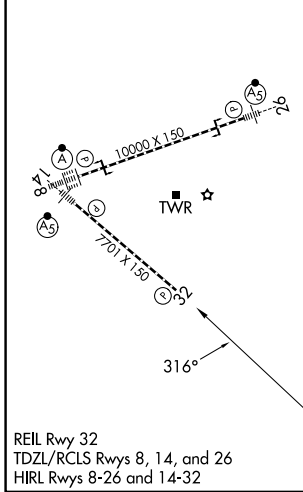
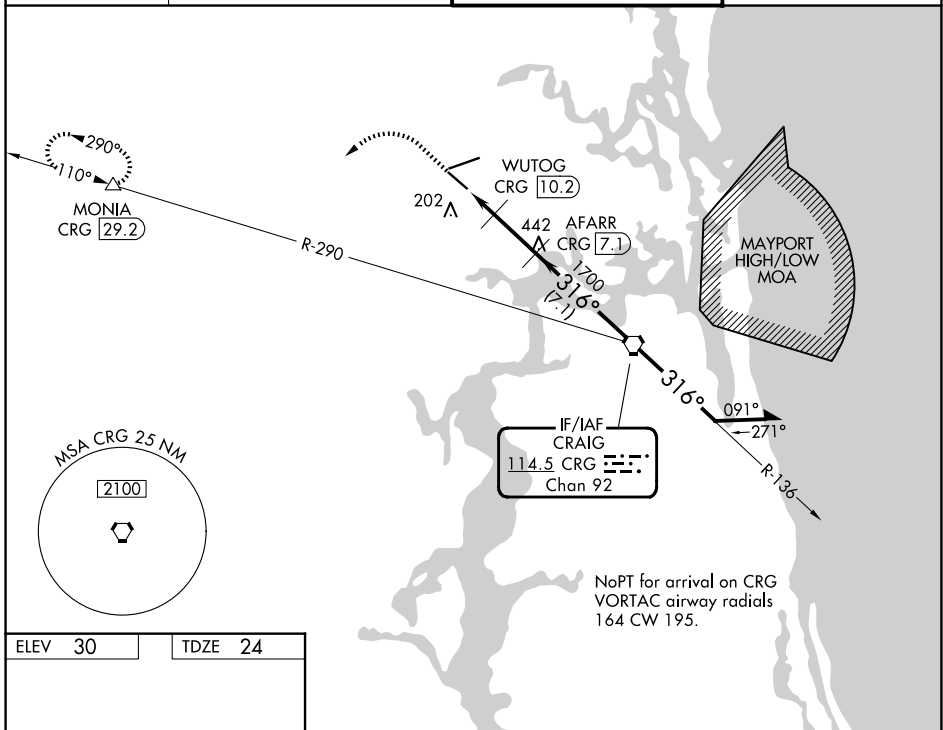
VOR/DME RWY 32

JACKSONVILLE INTL (JAX)

▼ Rwy 32 helicopter visibility reduction by below ¼ SM NA.
▲ Cat E procedure turn NA.

MISSED APPROACH: Climb to 1000 then climbing left turn to 3000 on heading 250° and on CRG VORTAC R-290 to MONIA/CRG 29.2 DME and hold.

D-ATIS 125.85	JACKSONVILLE APP CON 119.0 269.9	JACKSONVILLE TOWER 118.3 317.7	GND CON 121.9 348.6
-------------------------	--	--	-------------------------------



SE-3, 14 MAY 2026 to 11 JUN 2026

SE-3, 14 MAY 2026 to 11 JUN 2026