

(GIFFA1.GIFFA) 24193

GIFFA ONE DEPARTURE

AL-5573 (FAA)

CONROE/NORTH HOUSTON RGNL (C'X'O)
HOUSTON, TEXAS

ATIS 118.325
 CLNC DEL 120.45
 CLNC DEL (when twr closed) 119.55
 GND CON 120.45
 CONROE TOWER ★ 124.125 (CTAF)
 HOUSTON DEP CON 119.7 281.4

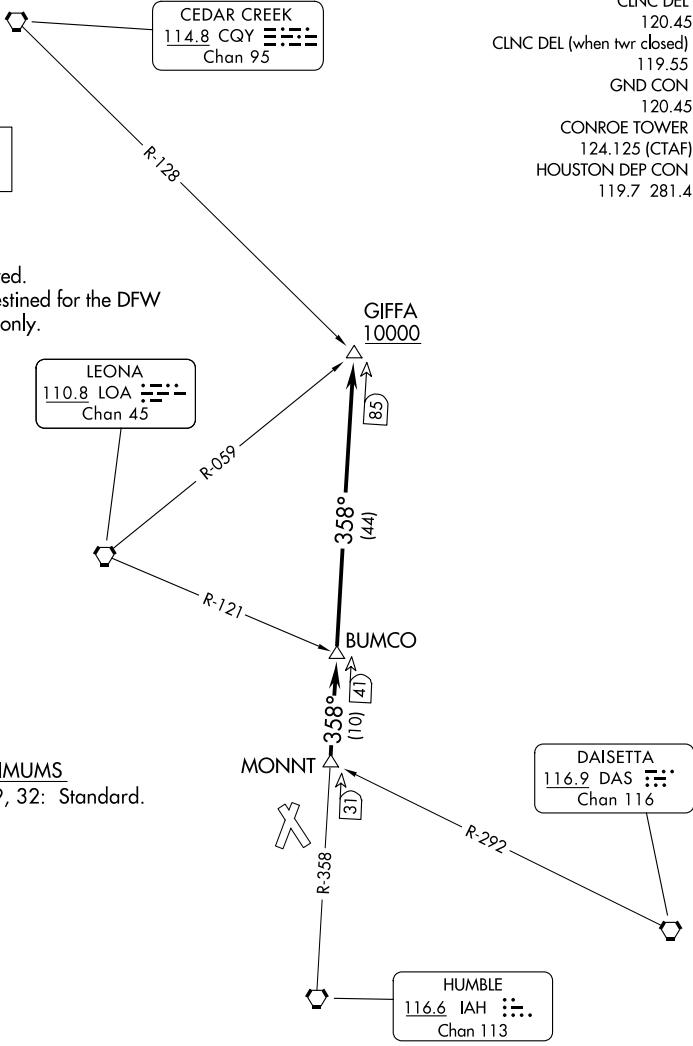
**TOP ALTITUDE:
ASSIGNED BY ATC**

NOTE: RADAR required.
 NOTE: For aircraft destined for the DFW terminal area only.

TAKEOFF MINIMUMS

Rwys 1, 14, 19, 32: Standard.

NOTE: Chart not to scale.



SC-5, 14 MAY 2026 to 11 JUN 2026

SC-5, 14 MAY 2026 to 11 JUN 2026

DEPARTURE ROUTE DESCRIPTION

TAKEOFF ALL RUNWAYS: When entering controlled airspace, climb on assigned heading for RADAR vectors to MONNT INT. Maintain ATC assigned altitude. Expect filed altitude 10 minutes after departure, thence. . . .

. . . . on IAH R-358 to cross GIFFA INT at or above 10000.

GIFFA ONE DEPARTURE
 (GIFFA1.GIFFA) 07OCT21

HOUSTON, TEXAS
 CONROE/NORTH HOUSTON RGNL (C'X'O)