

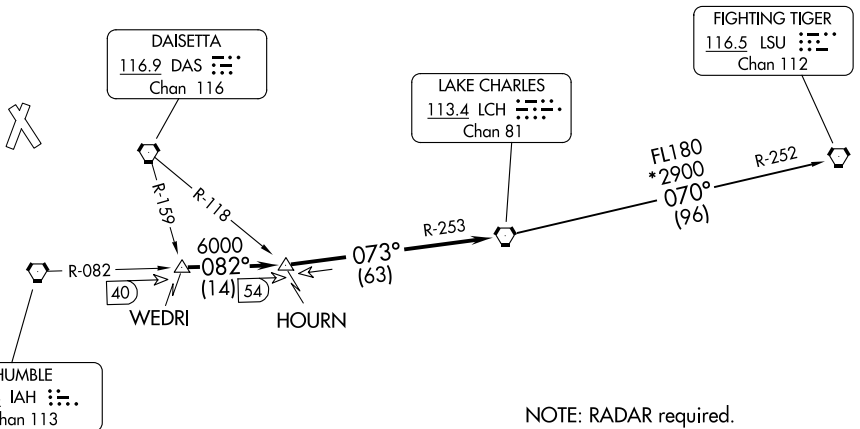
(LCH5.LCH) 24137

LAKE CHARLES FIVE DEPARTURE

CONROE/NORTH HOUSTON RGNL (CXXO)
AL-5573 (FAA) HOUSTON, TEXAS

ATIS
118.325
CLNC DEL
120.45
CLNC DEL (when twr closed)
119.55
GND CON
120.45
CONROE TOWER ★
124.125 (CTAF)
HOUSTON DEP CON
119.7 281.4

**TOP ALTITUDE:
ASSIGNED BY ATC**



NOTE: RADAR required.

TAKEOFF MINIMUMS
Rwy 1, 14, 19, 32 Standard.

NOTE: Chart not to scale.



DEPARTURE ROUTE DESCRIPTION

When entering controlled airspace, climb on assigned heading for RADAR vectors to WEDRI INT. Maintain ATC assigned altitude. Expect filed altitude 10 minutes after departure, thence. . . .

. . . .on IAH R-082 to HOURS INT, then on LCH R-253 to LCH VORTAC.

FIGHTING TIGERS TRANSITION (LCH5.LSU): From over LCH VORTAC on LCH R-070 and LSU R-252 to LSU VORTAC.

LAKE CHARLES FIVE DEPARTURE
(LCH5.LCH) 22JUN17

HOUSTON, TEXAS
CONROE/NORTH HOUSTON RGNL (CXXO)

SC-5, 14 MAY 2026 to 11 JUN 2026

SC-5, 14 MAY 2026 to 11 JUN 2026