

(LFK4.LFK) 25331

AL-5573 (FAA)

CONROE/NORTH HOUSTON RGNL (C'X'O)  
HOUSTON, TEXAS

# LUFKIN FOUR DEPARTURE

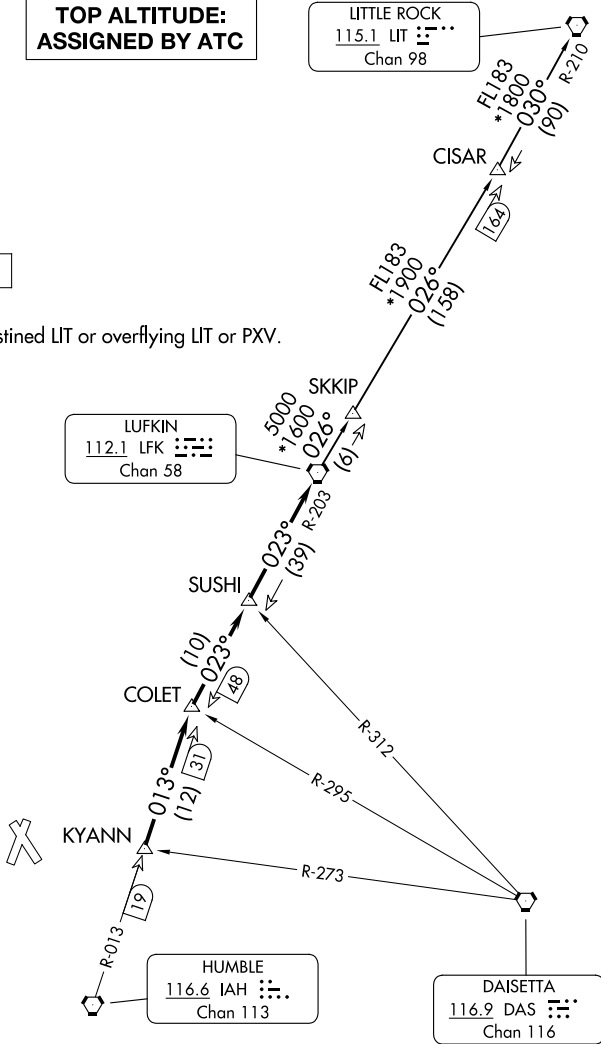
HOUSTON DEP CON  
119.7 281.4  
ATIS  
118.325  
CLNC DEL  
120.45  
CLNC DEL  
119.55 (When twr closed)  
GND CON  
120.45  
CONROE TOWER \*  
124.125 (CTAF)

**TOP ALTITUDE:  
ASSIGNED BY ATC**

LITTLE ROCK  
115.1 LIT ::::  
Chan 98

RADAR and DME required.

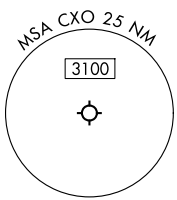
NOTE: For aircraft destined LIT or overflying LIT or PXV.



LUFKIN  
112.1 LFK ::::  
Chan 58

HUMBLE  
116.6 IAH ::::  
Chan 113

DAISETTA  
116.9 DAS ::::  
Chan 116



TAKEOFF MINIMUMS  
Rwys 1, 14, 19, 32: Standard.

NOTE: Chart not to scale.

(CONTINUED ON FOLLOWING PAGE)

SC-5, 14 MAY 2026 to 11 JUN 2026

SC-5, 14 MAY 2026 to 11 JUN 2026

LUFKIN FOUR DEPARTURE  
(LFK4.LFK) 27NOV25

HOUSTON, TEXAS  
CONROE/NORTH HOUSTON RGNL (C'X'O)

# LUFKIN FOUR DEPARTURE



## DEPARTURE ROUTE DESCRIPTION

TAKEOFF ALL RUNWAYS: When entering controlled airspace, climb on assigned heading for RADAR vectors to KYANN INT. Maintain ATC assigned altitude. Expect filed altitude 10 minutes after departure, thence. . . .

. . . .on IAH R-013 to COLET INT, then on depicted route to LFK VORTAC.

LITTLE ROCK TRANSITION (LFK4.LIT): From over LFK VORTAC on LFK R-026 to CISAR, then on LIT R-210 to LIT VORTAC.

SC-5, 14 MAY 2026 to 11 JUN 2026

SC-5, 14 MAY 2026 to 11 JUN 2026