

WAAS CH <b>86719</b>	APP CRS <b>012°</b>	Rwy Ldg TDZE Apt Elev	<b>5000</b> <b>237</b> <b>245</b>
<b>W01A</b>			

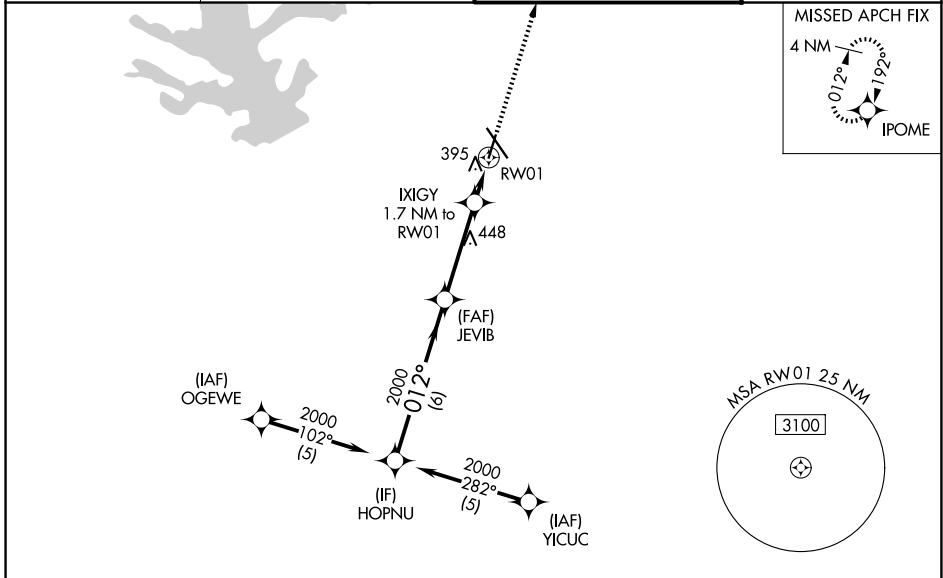
# RNAV (GPS) RWY 1

CONROE/NORTH HOUSTON RGNL (C̄X̄O)

**⚠** For uncompensated Baro-VNAV systems, LNAV/VNAV NA below -15°C (5°F) or above 48°C (118°F). DME/DME RNP-0.3 NA. Rwy 1 helicopter visibility reduction below ¾ SM NA.

**MISSED APPROACH:** Climb to 2000 direct IPOME and hold.

ATIS <b>118.325</b>	HOUSTON APP CON <b>119.7 281.4</b>	CONROE TOWER★ <b>124.125 (CTAF) 0</b>	GND CON <b>120.45</b>
------------------------	---------------------------------------	--	--------------------------



SC-5, 14 MAY 2026 to 11 JUN 2026

SC-5, 14 MAY 2026 to 11 JUN 2026

ELEV	245	TDZE	237
GP 3.00° TCH 49	HOPNU — 2000 — 012° — JEVIB — 2000 — 012° — IXIGY — 2000 — 1.7 NM to RW01 — 395		
CATEGORY	A	B	C
LPV DA	521-1		284 (300-1)
LNAV/VNAV DA	651-1½		414 (500-1½)
LNAV MDA	660-1 423 (500-1)		660-1¼ 423 (500-1¼)
CIRCLING	700-1 455 (500-1)		880-1¾ 635 (700-1¾) 960-2¼ 715 (800-2¼)

