

WAAS CH <b>62819</b> <b>W32A</b>	APP CRS <b>321°</b>	Rwy Ldg TDZE Apt Elev	<b>7501</b> <b>245</b> <b>245</b>
--	------------------------	-----------------------------	---

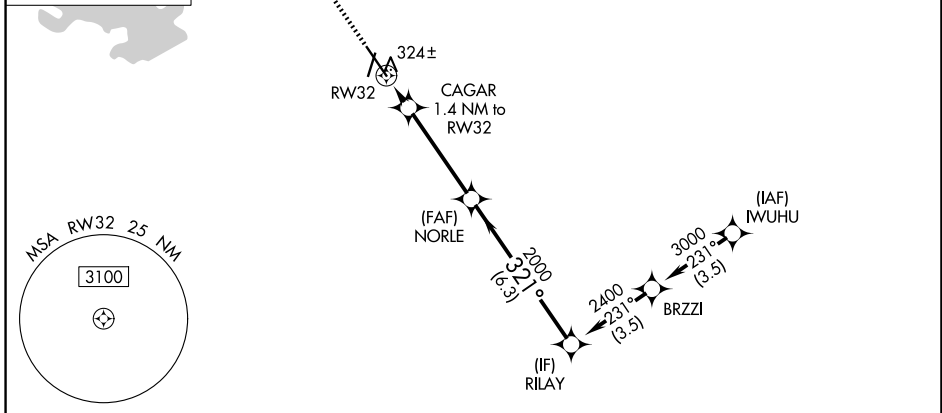
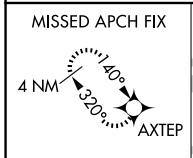
# RNAV (GPS) RWY 32

CONROE/NORTH HOUSTON RGNL (C'X'O)

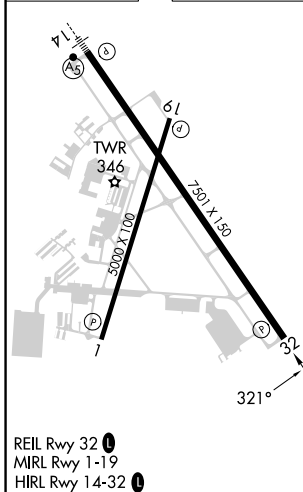
**⚠** For uncompensated Baro-VNAV systems, LNAV/VNAV NA below -6°C (-22°F) or above 54°C (130°F). DME/DME RNP-0,3 NA.  
**⚠** Rwy 32 helicopter visibility reduction below 3/4 SM NA.

MISSED APPROACH: Climb to 2100 direct AXTEP and hold.

ATIS <b>118.325</b>	HOUSTON APP CON <b>119.7 281.4</b>	CONROE TOWER* <b>124.125 (CTAF) 0</b>	GND CON <b>120.45</b>
------------------------	---------------------------------------	--	--------------------------



ELEV <b>245</b>	<b>D</b>	TDZE <b>245</b>
-----------------	----------	-----------------



2100	AXTEP				
*LNAV only.	CAGAR 1.4 NM to RW32	NORLE 2000	RILAY 2400	GP 3.00° TCH 50	
	720*	2000			
	+1.4 NM	4 NM	6.3 NM		
CATEGORY	A	B	C	D	
LPV DA	495-3/4		250 (300-3/4)		
LNAV/VNAV DA	505-7/8		260 (300-7/8)		
LNAV MDA	580-1		335 (400-1)		
CIRCLING	700-1	455 (500-1)	880-1 3/4 635 (700-1 3/4)	960-2 1/4 715 (800-2 1/4)	

SC-5, 14 MAY 2026 to 11 JUN 2026

SC-5, 14 MAY 2026 to 11 JUN 2026