

(STYCK8.STYCK) 21336

AL-5573 (FAA)

CONROE/NORTH HOUSTON RGNL (C̄XO)

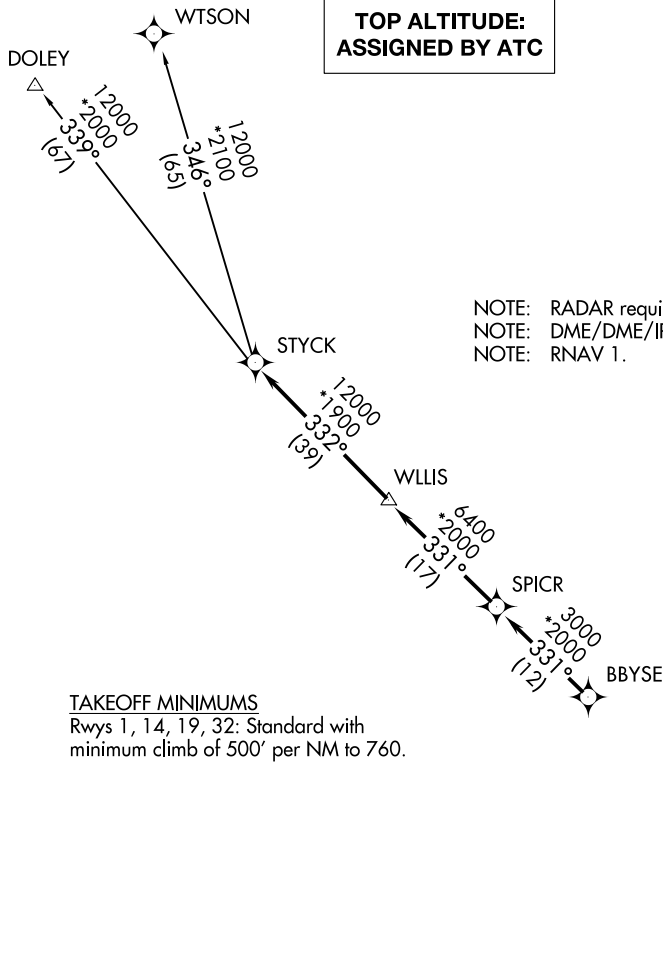
STYCK EIGHT DEPARTURE (RNAV)

HOUSTON, TEXAS

ATIS
 118.325
 CLNC DEL
 120.45
 CLNC DEL
 119.55 (when twr closed)
 GND CON
 120.45
 CONROE TOWER ★
 124.125 (CTAF)
 HOUSTON DEP CON
 119.7 281.4

**TOP ALTITUDE:
 ASSIGNED BY ATC**

NOTE: RADAR required.
 NOTE: DME/DME/IRU or GPS required.
 NOTE: RNAV 1.



TAKEOFF MINIMUMS
 Rwys 1, 14, 19, 32: Standard with
 minimum climb of 500' per NM to 760.

NOTE: Chart not to scale.



DEPARTURE ROUTE DESCRIPTION

TAKEOFF RUNWAY 1: Climb on heading 012° to 760 for RADAR vectors to BBYSE, thence. . .
TAKEOFF RUNWAY 14: Climb on heading 140° to 760 for RADAR vectors to BBYSE, thence. . .
TAKEOFF RUNWAY 19: Climb on heading 192° to 760 for RADAR vectors to BBYSE, thence. . .
TAKEOFF RUNWAY 32: Climb on heading 320° to 760 for RADAR vectors to BBYSE, thence. . .
 . . .on track 331° to SPICR, then on track 331° to WLLIS, then on track 332° to STYCK, then on
 (transition). Maintain ATC assigned altitude. Expect filed altitude 10 minutes after departure.

DOLEY TRANSITION (STYCK8.DOLEY)
WTSON TRANSITION (STYCK8.WTSON)

STYCK EIGHT DEPARTURE (RNAV)

(STYCK8.STYCK) 07OCT21

HOUSTON, TEXAS

CONROE/NORTH HOUSTON RGNL (C̄XO)

SC-5, 14 MAY 2026 to 11 JUN 2026

SC-5, 14 MAY 2026 to 11 JUN 2026