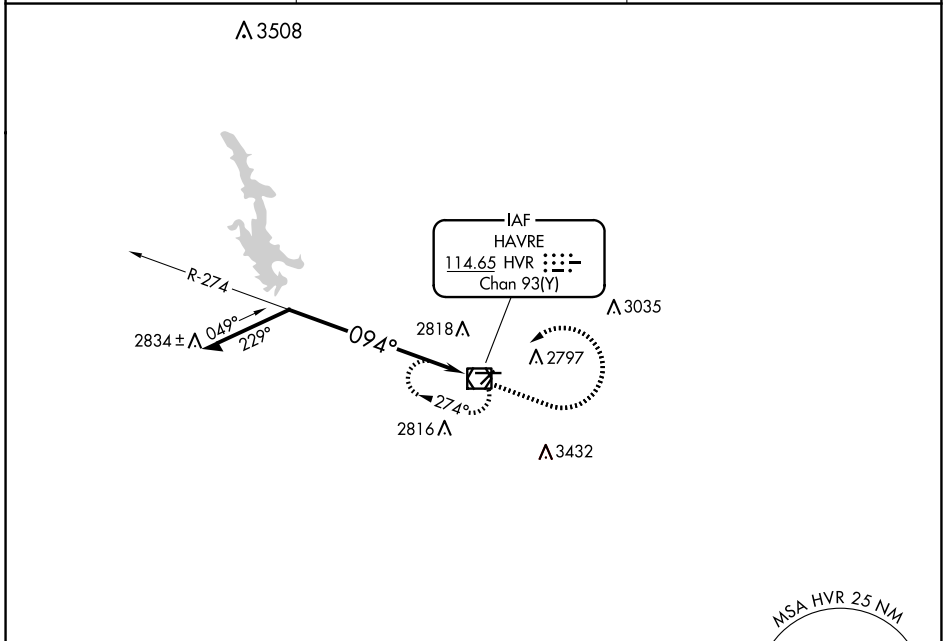


VOR/DME HVR 114.65 Chan 93(Y)	APP CRS 094°	Rwy Idg TDZE Apt Elev	5205 2585 2591
--------------------------------------------	------------------------	-----------------------------	-------------------------------------------

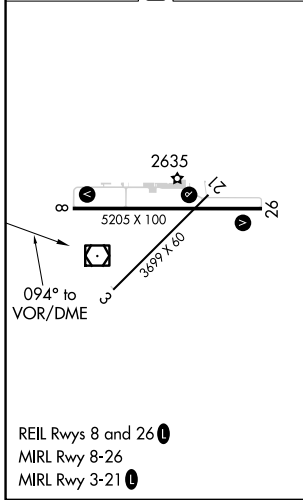
VOR RWY 8
HAVRE CITY-COUNTY (HVR)

MISSED APPROACH: Climb to 3500 then climbing left turn to 8000 direct HVR VOR/DME and hold, continue climb-in-hold to 8000.

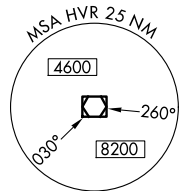
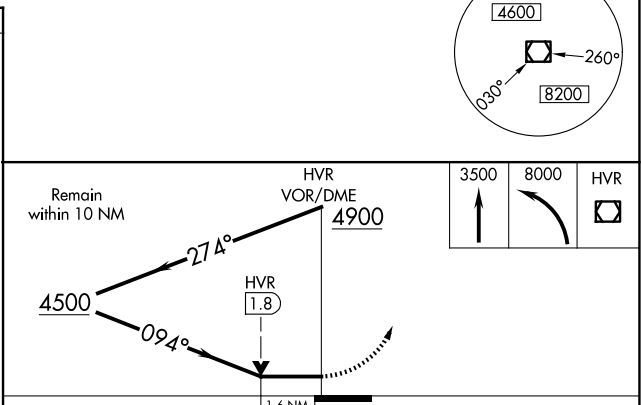
ASOS 135.225	SALT LAKE CENTER 133.4 285.4	UNICOM 122.8 (CTAF)
------------------------	----------------------------------------	-------------------------------



ELEV 2591	D	TDZE 2585
-----------	----------	-----------



REIL Rws 8 and 26
MIRL Rwy 8-26
MIRL Rwy 3-21



CATEGORY	A	B	C	D
S-8	3140-1	555 (600-1)	3140-1 5/8	555 (600-1 1/8)
CIRCLING	3140-1	549 (600-1)	3360-2 1/4 769 (800-2 1/4)	3740-3 1149 (1200-3)

NW-1, 14 MAY 2026 to 11 JUN 2026

NW-1, 14 MAY 2026 to 11 JUN 2026