


LOC I-CAC <b>111.7</b>	APP CRS <b>174°</b>	Rwy Ldg TDZE Apt Elev	<b>6705</b> <b>1530</b> <b>1534</b>
---------------------------	------------------------	-----------------------------	---

**ILS or LOC RWY 17**  
NEWTON-CITY-COUNTY (E WK)

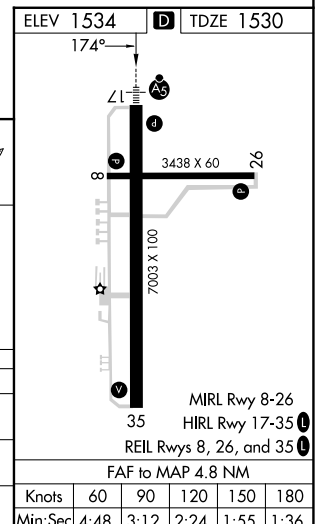
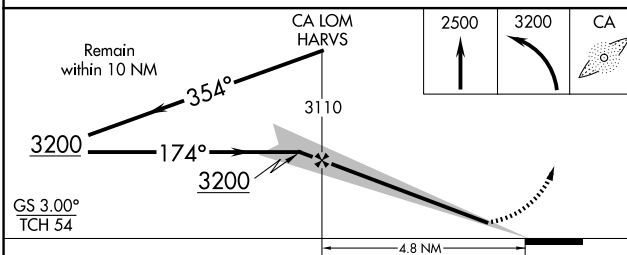
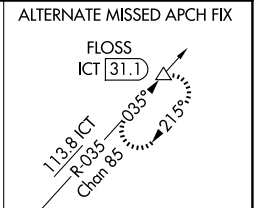
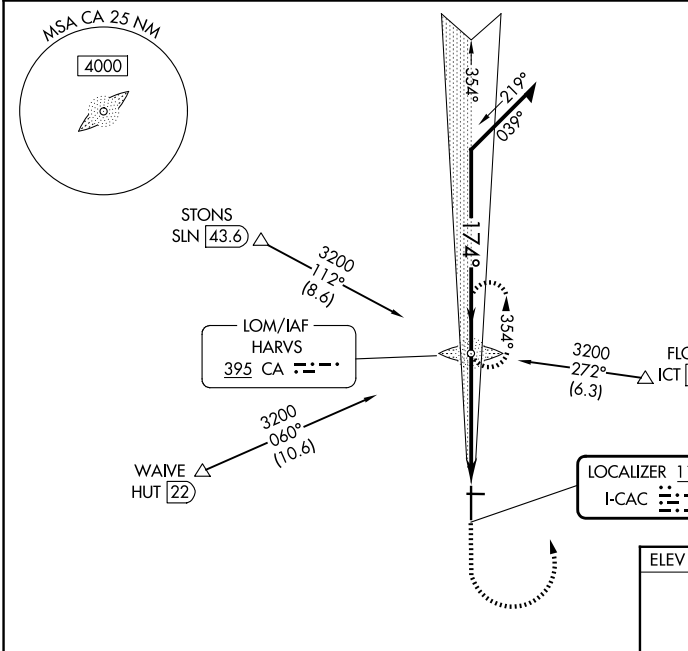
ADF required. DME required.

**⚠** When local altimeter setting not received, use Wichita Dwight D Eisenhower Ntl altimeter setting: increase S-ILS 17 DA to 1817 feet; increase all MDAs 100 feet and visibility S-LOC 17 Cat C and D ½ SM and Circling Cat C ⅓ SM. For inop ALS, increase S-LOC 17 Cat C and D visibility to 1 ⅓ SM. For inop ALS when using Wichita Dwight D Eisenhower Ntl altimeter setting, increase S-ILS 17 visibility to ⅔ SM and S-LOC 17 Cat C and D to 1 ⅓ SM. Circling Rwy 8, 26 NA at night. Autopilot coupled approach NA below 2000.

**MALSR**  


**MISSED APPROACH:** Climb to 2500 then climbing left turn to 3200 direct HARVS LOM and hold.

AWOS-3PT <b>123.875</b>	WICHITA APP CON <b>125.5 306.2</b>	CLNC DEL <b>126.55</b>	UNICOM <b>123.0 (CTAF)</b>
----------------------------	---------------------------------------	---------------------------	-------------------------------



CATEGORY	A	B	C	D
S-ILS 17	1730-½ 200 (200-½)			
S-LOC 17	2000-½ 470 (500-½)		2000-1 470 (500-1)	
CIRCLING	2000-1 466 (500-1)		2000-1½ 2100-2 466 (500-1½) 566 (600-2)	

NC-2, 14 MAY 2026 to 11 JUN 2026

NC-2, 14 MAY 2026 to 11 JUN 2026