


WAAS CH <b>56213</b> <b>W24A</b>	APP CRS <b>244°</b>	Rwy ldg TDZE Apt Elev	<b>5130</b> <b>817</b> <b>823</b>
----------------------------------------	------------------------	-----------------------------	-----------------------------------------

# RNAV (GPS) RWY 24

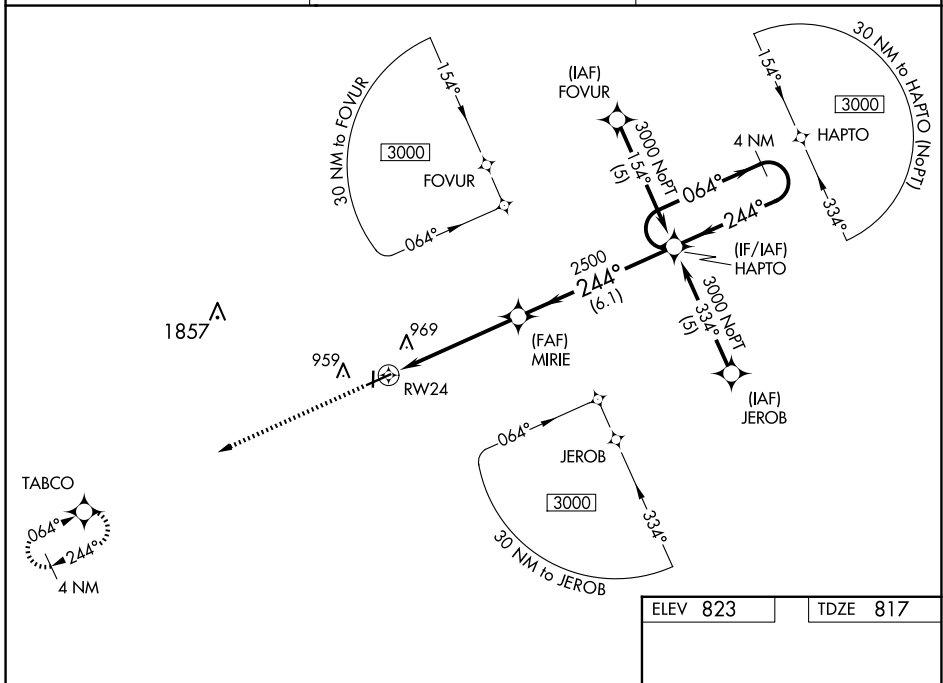
MEXICO MEML (MYJ)

**NA** Helicopter visibility reduction below ¾ SM NA. Inoperative table does not apply. DME/DME RNP-0.3 NA. For uncompensated Baro-VNAV systems, LNAV/VNAV NA below -16°C (4°F) or above 54°C (130°F). When local altimeter setting not received, use Columbia Rgnl altimeter setting; increase LPV DA to 1200 feet; increase LNAV/VNAV DA to 1352 feet; increase all MDAs 80 feet and Circling visibility Cat C ½ SM. Baro-VNAV NA when using Columbia Rgnl altimeter setting.

**MALS** 

**MISSED APPROACH:** Climb to 3000 direct TABCO and hold.

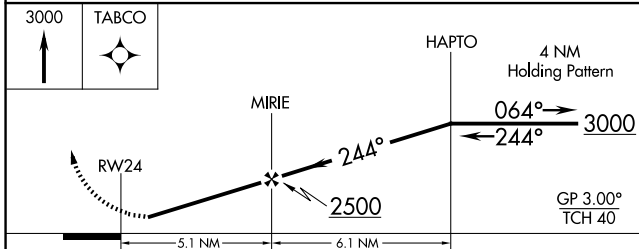
AWOS-3PT <b>120.575</b>	MIZZU APP CON <b>124.375</b>	CTAF <b>122.9</b>
----------------------------	---------------------------------	----------------------



NC-3, 14 MAY 2026 to 11 JUN 2026

NC-3, 14 MAY 2026 to 11 JUN 2026


ELEV 823	TDZE 817
----------	----------



CATEGORY	A	B	C	D
LPV DA	1126-1	309 (400-1)		NA
LNAV/VNAV DA	1278-1¾	461 (500-1¾)		NA
LNAV MDA	1220-1	403 (400-1)	1220-1¼ 403 (400-1¼)	NA
CIRCLING	1280-1	457 (500-1)	1420-1½ 597 (600-1½)	NA

**Obstacle Chart:** Shows terrain profile and obstacle elevations. Key values include:
 

- Obstacle 81 (3200' X 50)
- Obstacle 36 (5501' X 100)
- Obstacle 0 (0.3% UP)
- Obstacle 0 (0.2%)
- Obstacle 0 (0.2%)

REIL Rwy 18   
 MRL Rwy 6-24 and 18-36 