

WAAS CH 53336 W27A	APP CRS 274°	Rwy Ldg TDZE 36 Apt Elev 38	4002
--	------------------------	---	-------------

RNAV (GPS) RWY 27

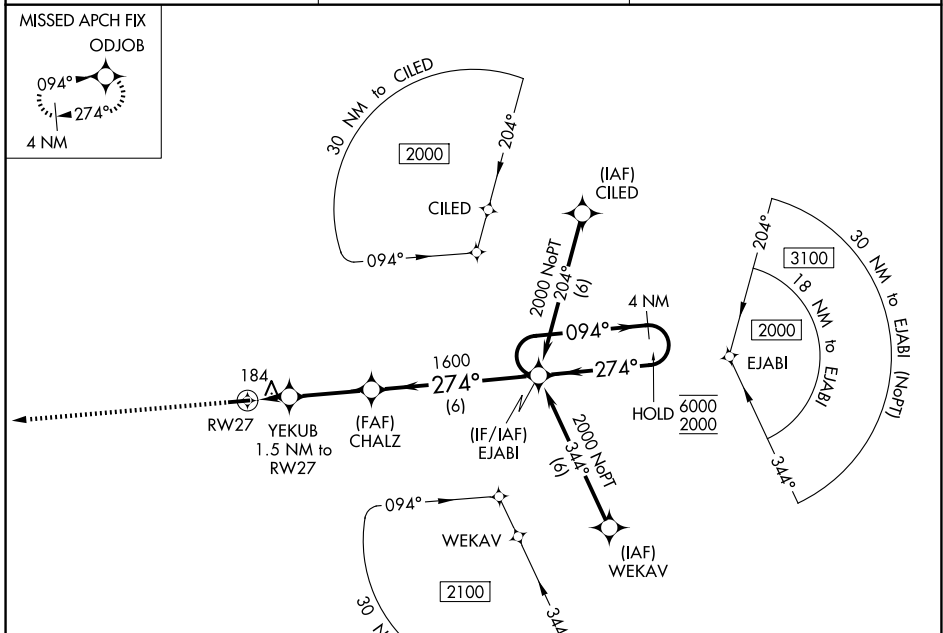
WALLACE-PENDER (ACZ)

RNP APCH - GPS.

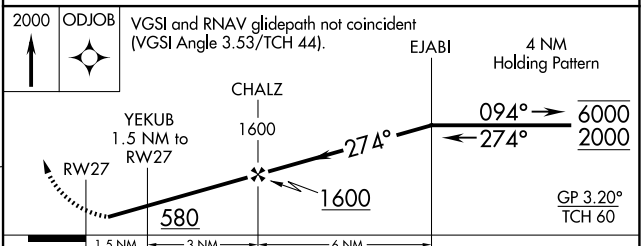
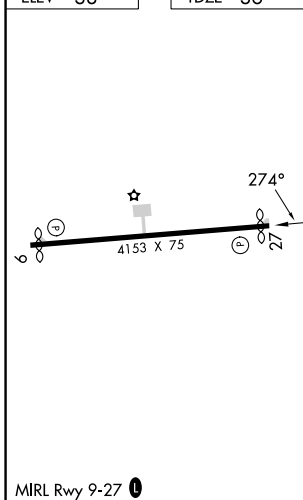
⚠ Circling Rwy 9 NA at night. Rwy 27 helicopter visibility reduction below 3/4 SM NA.
⚠ NA Baro-VNAV NA. When local altimeter setting not received, use Kenansville altimeter setting.

MISSED APPROACH: Climb to 2000 direct ODJOB and hold.

AWOS-3P 121.07	WILMINGTON APP CON★ 135.75 317.425	UNICOM 122.8 (CTAF) 0
--------------------------	--	---------------------------------



ELEV 38	TDZE 36
---------	---------



CATEGORY	A	B	C	D
LPV DA	406-1 370 (400-1)			NA
LNAV/VNAV DA	599-1 3/4 563 (600-1 3/4)			NA
LNAV MDA	560-1	524 (600-1)	560-1 1/2	524 (600-1 1/2)
CIRCLING	620-1	582 (600-1)	820-2 1/4 782 (800-2 1/4)	820-2 1/2 782 (800-2 1/2)

SE-2, 14 MAY 2026 to 11 JUN 2026

SE-2, 14 MAY 2026 to 11 JUN 2026