

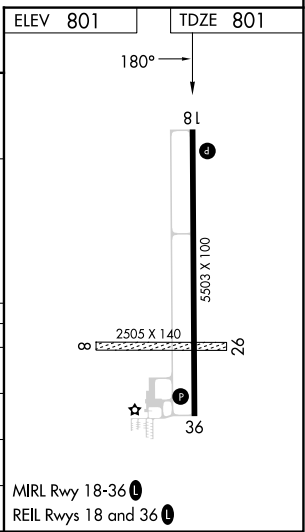
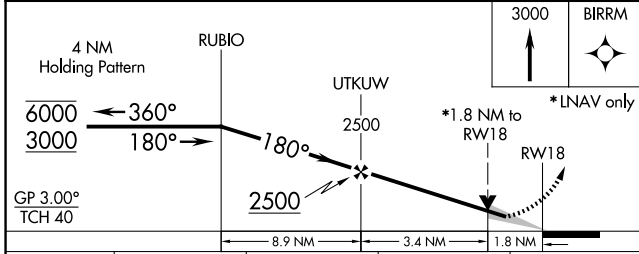
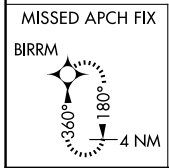
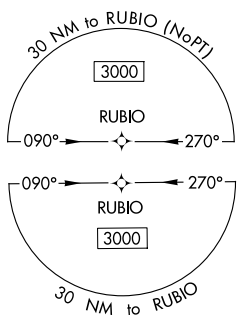
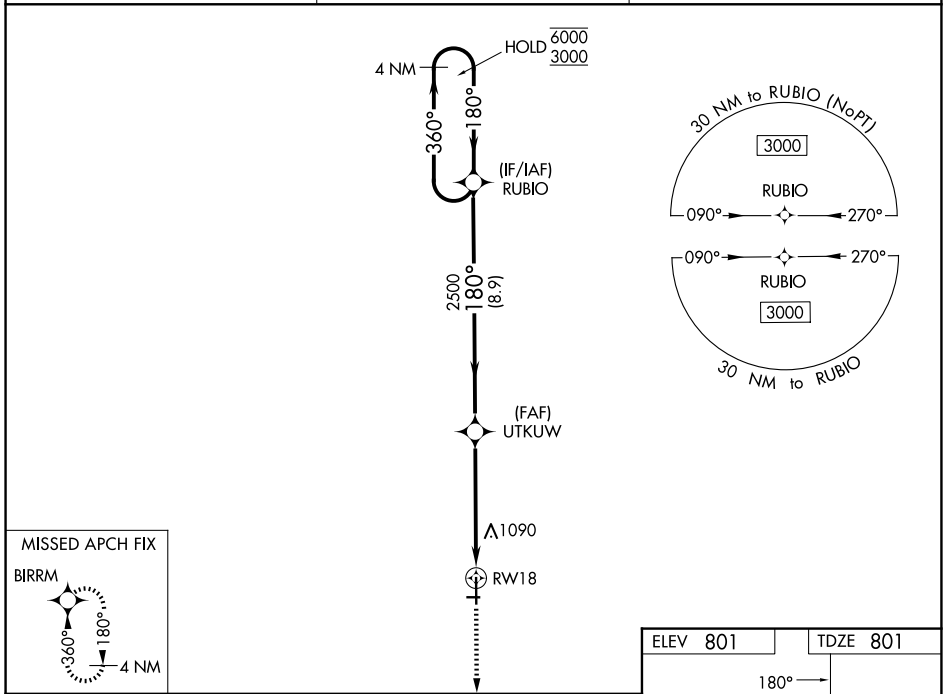
WAAS CH 82503 W18A	APP CRS 180°	Rwy Ldg 5503 TDZE 801 Apt Elev 801
--	------------------------	---

RNAV (GPS) RWY 18

FAIRFIELD MUNI (F'FL)

RNP APCH.	<p>▽ Circling NA to Rwys 8 and 26. For uncompensated Baro-VNAV systems, LNAV/VNAV NA below -16°C or above 54°C.</p> <p>▲ MISSED APPROACH: Climb to 3000 direct BIRRM and hold.</p>
-----------	--

AWOS-3 132,025	CHICAGO CENTER 118.15 335.575	UNICOM 122.7 (CTAF)
--------------------------	---	-------------------------------



CATEGORY	A	B	C	D
LPV DA	1001- ³ / ₄	200 (200- ³ / ₄)		NA
LNAV/VNAV DA	1471-1 ⁷ / ₈	670 (700-1 ⁷ / ₈)		NA
LNAV MDA	1400-1	599 (600-1)	1400-1 ³ / ₄ 599 (600-1 ³ / ₄)	NA
CIRCLING	1400-1 599 (600-1)	1440-1 639 (700-1)	1440-1 ³ / ₄ 639 (700-1 ³ / ₄)	NA

NC-3, 14 MAY 2026 to 11 JUN 2026

NC-3, 14 MAY 2026 to 11 JUN 2026