

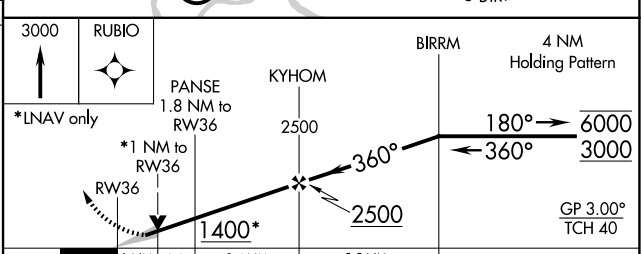
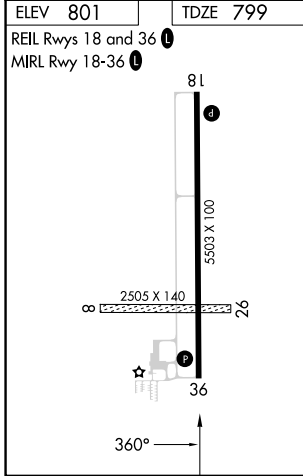
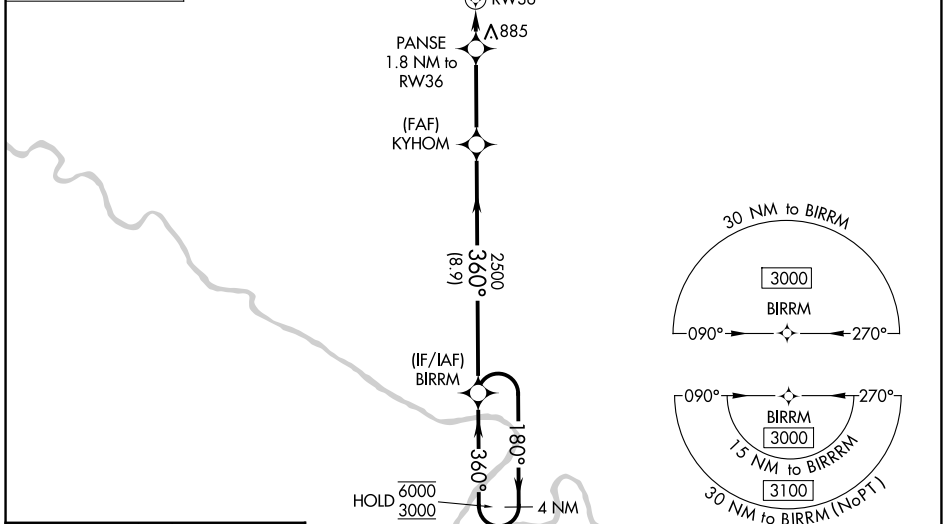
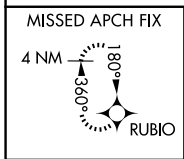
WAAS CH <b>72804</b> <b>W36A</b>	APP CRS <b>360°</b>	Rwy Ldg <b>5503</b> TDZE <b>799</b> Apt Elev <b>801</b>
--	------------------------	---

# RNAV (GPS) RWY 36

FAIRFIELD MUNI (F'FL)

RNP APCH.	MISSED APPROACH: Climb to 3000 direct RUBIO and hold.
<p>⚠ Circling NA to Rwy's 8 and 26. For uncompensated Baro-VNAV systems, LNAV/VNAV NA below -16°C or above 54°C.</p>	

AWOS-3 <b>132.025</b>	CHICAGO CENTER <b>118.15 335.575</b>	UNICOM <b>122.7 (CTAF)</b>
--------------------------	---	-------------------------------



CATEGORY	A	B	C	D
LPV DA	999- <sup>3</sup> / <sub>4</sub>	200 (200- <sup>3</sup> / <sub>4</sub> )		NA
LNAV/VNAV DA	1049- <sup>3</sup> / <sub>4</sub>	250 (300- <sup>3</sup> / <sub>4</sub> )		NA
LNAV MDA	1140-1	341 (400-1)		NA
CIRCLING	1200-1 399 (400-1)	1440-1 639 (700-1)	1440-1 <sup>3</sup> / <sub>4</sub> 639 (700-1 <sup>3</sup> / <sub>4</sub> )	NA

NC-3, 14 MAY 2026 to 11 JUN 2026

NC-3, 14 MAY 2026 to 11 JUN 2026