

WAAS CH <b>65936</b> <b>W18A</b>	APP CRS <b>183°</b>	Rwy Ldg TDZE Apt Elev	<b>4359</b> <b>539</b> <b>539</b>
--	------------------------	-----------------------------	---

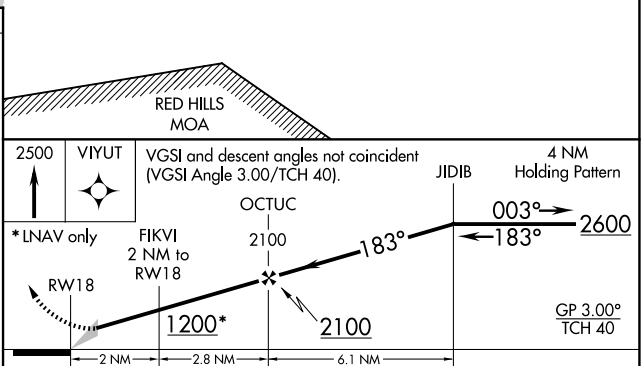
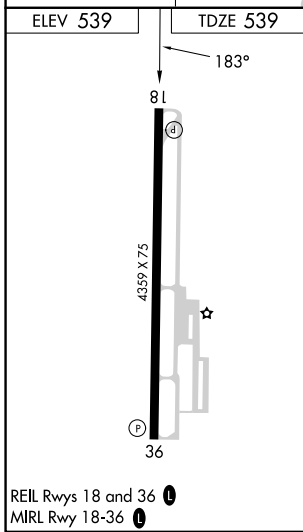
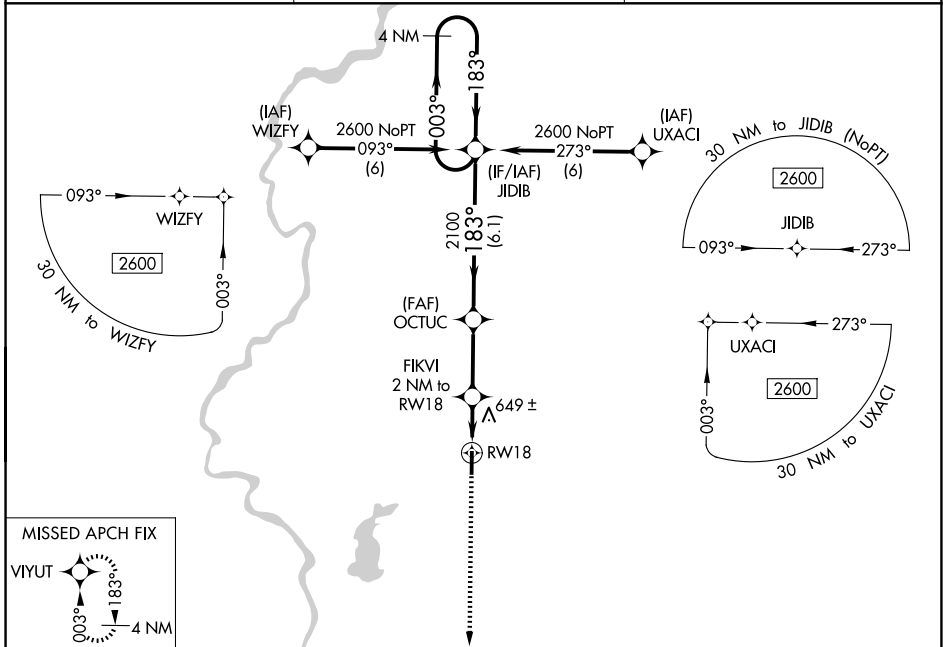
# RNAV (GPS) RWY 18

SULLIVAN COUNTY (SIV)

**Baro-VNAV NA. DME/DME RNP-0.3 NA. When Robinson altimeter setting is not received, use Terre Haute Intl-Hulman Field altimeter setting and increase all DA/MDA 20 feet.**

**MISSED APPROACH:**  
Climb to 2500 direct VIYUT and hold.

RSV AWOS-3 <b>120.5</b>	HULMAN APP CON <b>135.35 339.8</b>	UNICOM <b>122.8 (CTAF) 0</b>
----------------------------	---------------------------------------	---------------------------------



CATEGORY	A	B	C	D
LPV DA	826-1	287 (300-1)		NA
LNNAV/VNAV DA	826-1	287 (300-1)		NA
LNNAV MDA	940-1	401 (500-1)		NA
CIRCLING	1000-1 461 (500-1)	1080-1 541 (600-1)		NA

EC-2, 14 MAY 2026 to 11 JUN 2026

EC-2, 14 MAY 2026 to 11 JUN 2026