

WAAS CH <b>82136</b> <b>W36A</b>	APP CRS <b>003°</b>	Rwy Ldg TDZE <b>539</b> Apt Elev <b>539</b>
--	------------------------	---

# RNAV (GPS) RWY 36

SULLIVAN COUNTY (SIV)

RNP APCH.

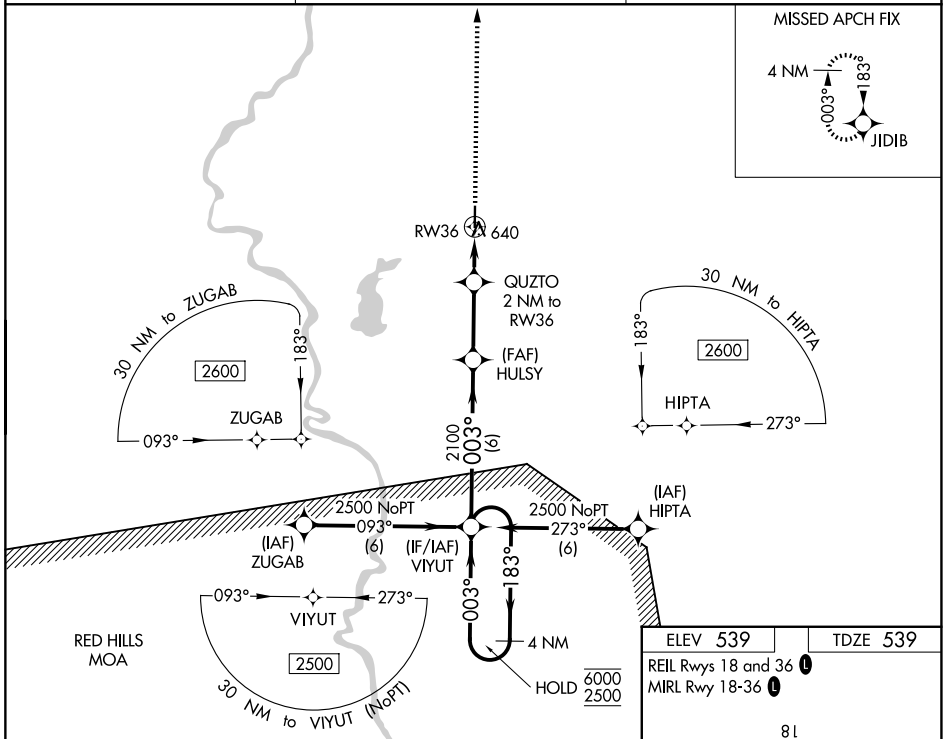
**▽** Baro-VNAV NA. Use Robinson altimeter setting; when not received, use Terre Haute altimeter setting and increase LPV DA to 876, increase LNAV/VNAV DA to 889, and increase all MDA 20 feet.  
**▲** NA

MISSED APPROACH:  
Climb to 2600 direct  
JIDIB and hold.

RSV AWOS-3  
**120.5**

HULMAN APP CON  
**135.35 339.8**

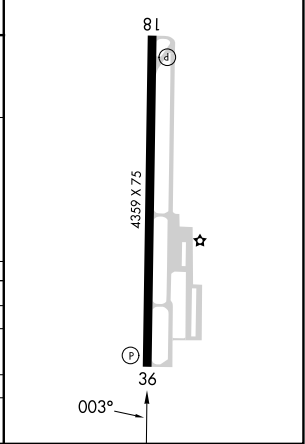
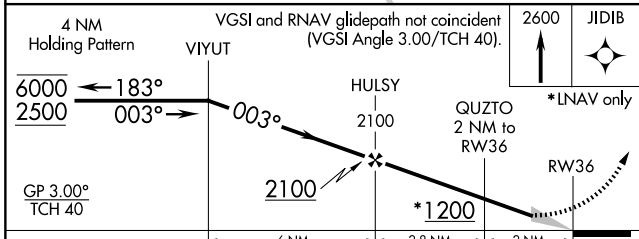
UNICOM  
**122.8** (CTAF) **0**



EC-2, 14 MAY 2026 to 11 JUN 2026

EC-2, 14 MAY 2026 to 11 JUN 2026

ELEV 539	TDZE 539
REIL Rwy 18 and 36	
MIRL Rwy 18-36	



CATEGORY	A	B	C	D
LPV DA	856-1 1/8	317 (400-1 1/8)		NA
LNAV/VNAV DA	869-1	330 (400-1)		NA
LNAV MDA	980-1	441 (500-1)		NA
CIRCLING	1000-1 461 (500-1)	1080-1 541 (600-1)		NA