

AIRPORT DIAGRAM

REID-HILLVIEW OF SANTA CLARA COUNTY (R.H.V)
AL-5591 (FAA)
SAN JOSE, CALIFORNIA

ATIS
125.2
REID-HILLVIEW TOWER ★
119.8 (CTAF) (RWY 13L-31R)
126.1 (RWY 13R-31L)
GND CON
121.65

FIELD
ELEV
135

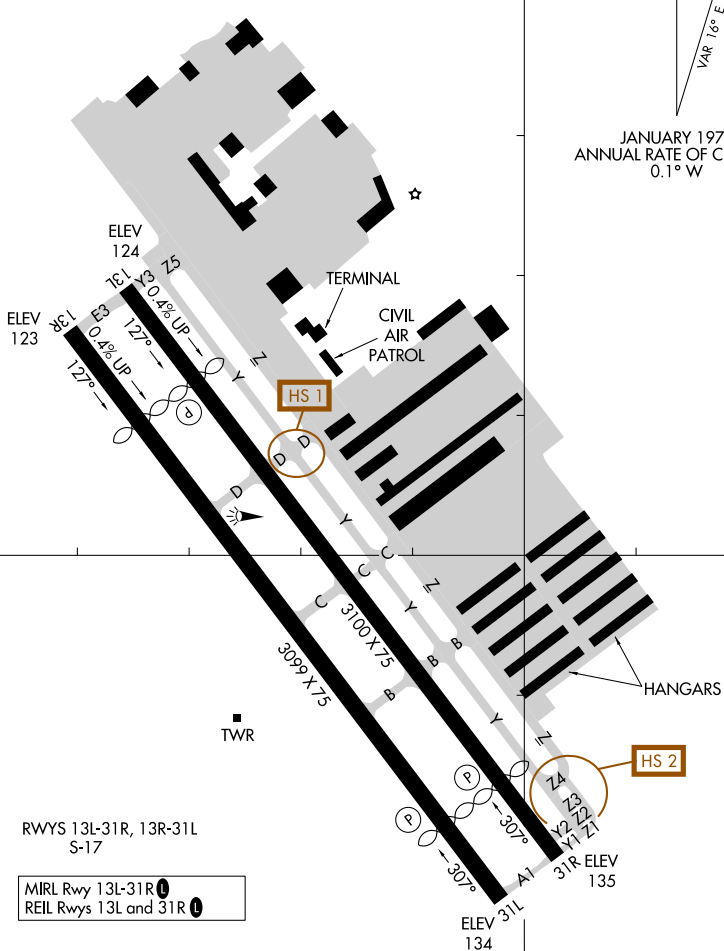
37°20.5'N

SAID in use. Operate transponders with altitude reporting mode and ADS-B (if equipped) enabled on all airport surfaces.

↑
VAR 16° E
JANUARY 1975
ANNUAL RATE OF CHANGE
0.1° W

SW-2, 14 MAY 2026 to 11 JUN 2026

SW-2, 14 MAY 2026 to 11 JUN 2026



37°20.0'N

RWYS 13L-31R, 13R-31L
S-17

MIRL Rwy 13L-31R
REIL Rwys 13L and 31R

ELEV 311
134

CAUTION: BE ALERT TO RUNWAY CROSSING CLEARANCES.
READBACK OF ALL RUNWAY HOLDING INSTRUCTIONS IS REQUIRED.

121°49.5'W

121°49.0'W

AIRPORT DIAGRAM

SAN JOSE, CALIFORNIA
REID-HILLVIEW OF SANTA CLARA COUNTY (R.H.V)