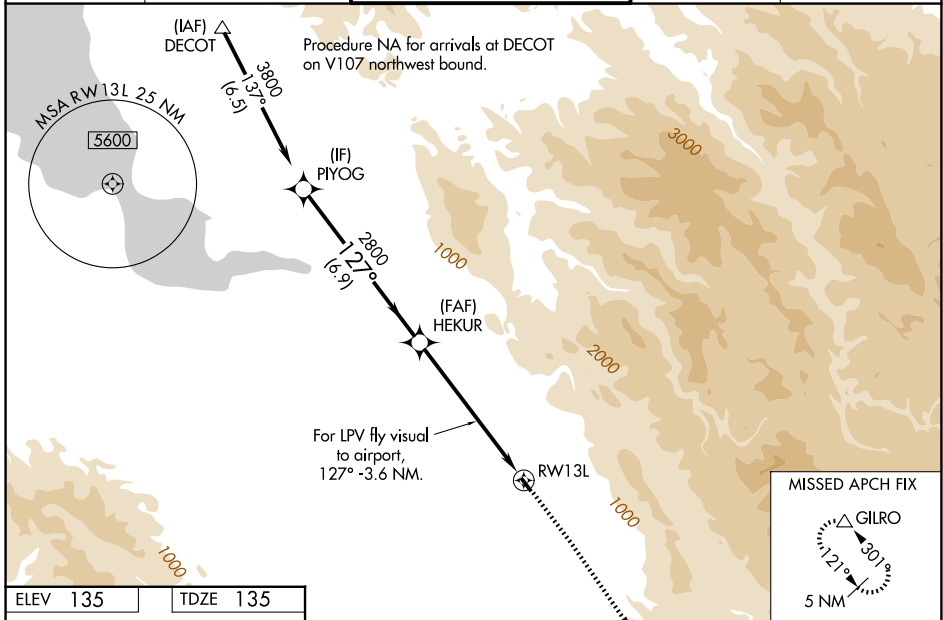


WAAS CH 82216 W13A	APP CRS 127°	Rwy Ldg TDZE 135 Apt Elev 135	2601
--	------------------------	---	-------------

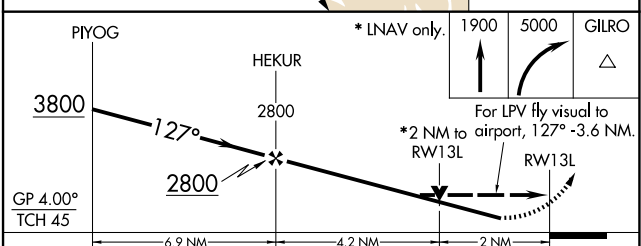
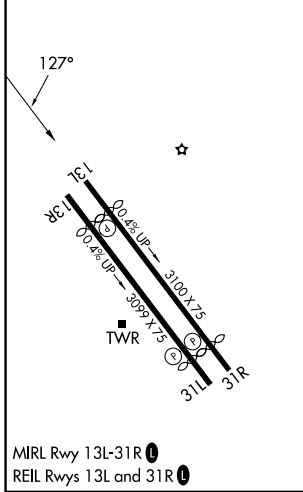
RNAV (GPS) RWY 13L

REID-HILLVIEW OF SANTA CLARA COUNTY (R.H.V)

RNP APCH.		REID-HILLVIEW TOWER ★ (Rwy 13L-31R) (Rwy 13R-31L) 119.8 (CTAF) 0 126.1		GND CON 121.65	UNICOM 122.95
ATIS 125.2	NORCAL APP CON 120.1 290.25				



ELEV 135	TDZE 135
----------	----------



CATEGORY	A	B	C	D
LPV DA#	562-1¼	427 (500-1¼)		NA
LPV DA	1708-3	1573 (1600-3)		NA
LNAV MDA#	1040-1¼	905 (1000-1¼)		NA
LNAV MDA	1600-1¼ 1465 (1500-1¼)	1600-1½ 1465 (1500-1½)		NA
CIRCLING	1600-1¼ 1465 (1500-1¼)	1600-1½ 1465 (1500-1½)		NA

SW-2, 14 MAY 2026 to 11 JUN 2026

SW-2, 14 MAY 2026 to 11 JUN 2026