

APP CRS 312°	Rwy Ldg TDZE Apt Elev	2690 133 135
------------------------	-----------------------------	---

RNAV (GPS) Y RWY 31R

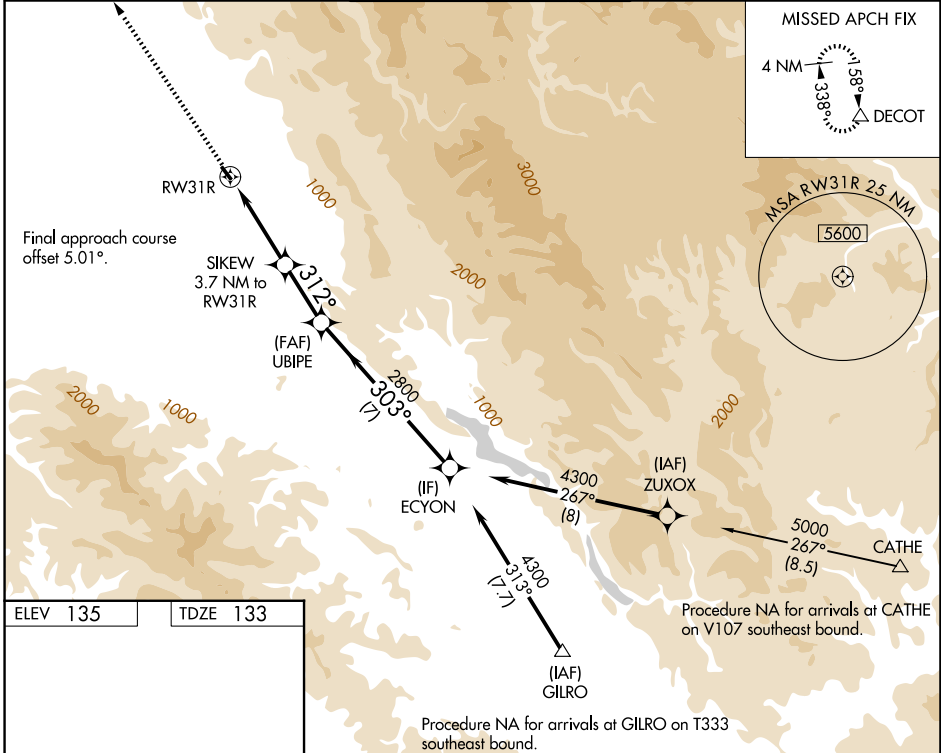
REID-HILLVIEW OF SANTA CLARA COUNTY (R.H.V)

RNP APCH.

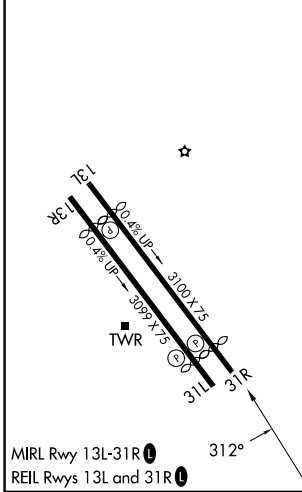
NA Circling Rwy 31L NA at night. Rwy 31R helicopter visibility reduction below 3/4 SM NA. VDP NA when using Norman Y Mineta San Jose Intl altimeter setting. Circling east of Rwy 13L-31R NA at night. When control tower closed, use Norman Y Mineta San Jose Intl altimeter setting and increase all MDAs 40 feet.

MISSED APPROACH: Climb to 4000 direct DECOT and hold.

ATIS 125.2	NORCAL APP CON 120.1 290.25	REID-HILLVIEW TOWER * (Rwy 13L-31R) (Rwy 13R-31L) 119.8 (CTAF) 0 126.1	GND CON 121.65	UNICOM 122.95
----------------------	---------------------------------------	---	--------------------------	-------------------------



ELEV 135	TDZE 133
----------	----------



	4000	DECOT		
			UBIPE	ECYON
			312°	303°
			1760	2800
			2.6 NM	1.1 NM
			2.5 NM	7 NM
CATEGORY	A	B	C	D
LNAV MDA	1300-1¼ 1167 (1200-1¼)	1300-1½ 1167 (1200-1½)		NA
CIRCLING	1300-1¼ 1165 (1200-1¼)	1300-1½ 1165 (1200-1½)		NA

SW-2, 14 MAY 2026 to 11 JUN 2026

SW-2, 14 MAY 2026 to 11 JUN 2026