

VOR/DME PVD <b>115.6</b> Chan <b>103</b>	APP CRS <b>164°</b>	Rwy Ldg TDZE Apt Elev	<b>2623</b> <b>162</b> <b>172</b>
------------------------------------------------	------------------------	-----------------------------	-----------------------------------------

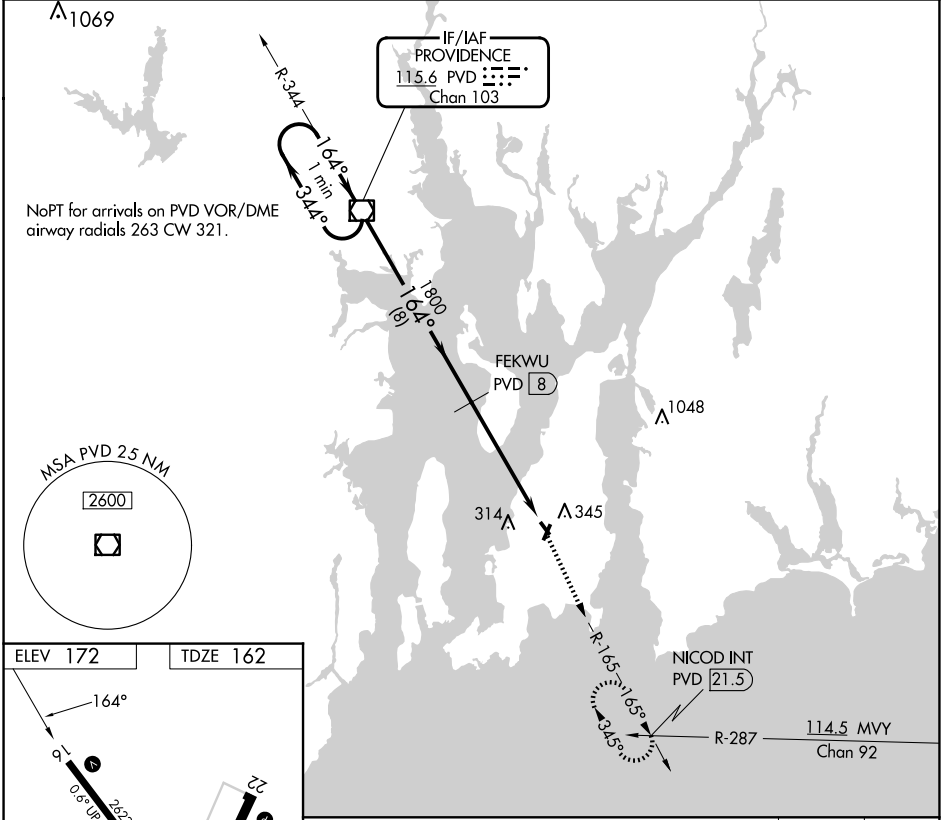
# VOR/DME RWY 16

NEWPORT STATE (UUU)

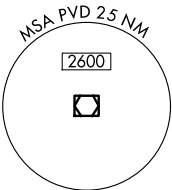
**⚠** When local altimeter setting not received, use Providence altimeter setting and increase all MDA 60 feet; increase S-16 Cat C visibility ¼ mile. Circling Rwy 4, 22, 34 NA at night. Rwy 16 helicopter visibility reduction below ¾ SM NA.

**MISSED APPROACH:** Climb to 2100 via PVD R-165 to NICOD INT/21.5 DME and hold.

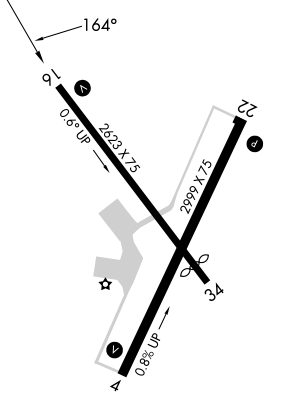
ASOS <b>132.075</b>	PROVIDENCE APP CON* <b>128.7 269.525</b>	CLNC DEL <b>127.25</b>	UNICOM <b>123.05 (CTAF)</b>
------------------------	---------------------------------------------	---------------------------	--------------------------------



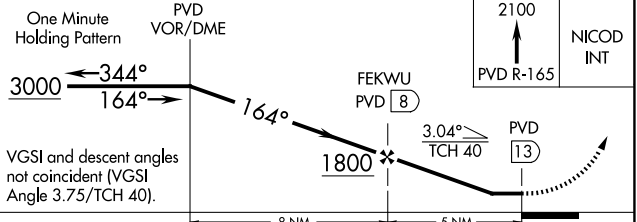
NoPT for arrivals on PVD VOR/DME airway radials 263 CW 321.



ELEV 172	TDZE 162
----------	----------



REIL Rwy 22  
MIRL Rws 4-22 and 16-34



CATEGORY	A	B	C	D
S-16	680-1	518 (600-1)	680-1½ 518 (600-1½)	NA
CIRCLING	700-1 528 (600-1)	760-1 588 (600-1)	780-1¾ 608 (700-1¾)	NA

NE-1, 14 MAY 2026 to 11 JUN 2026

NE-1, 14 MAY 2026 to 11 JUN 2026