


WAAS CH 77599 W02A	APP CRS 021°	Rwy Ldg TDZE 889 Apt Elev 889	7401
--	------------------------	---	-------------

RNAV (GPS) RWY 2

COLUMBIA RGNL (COT)

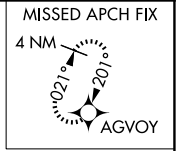
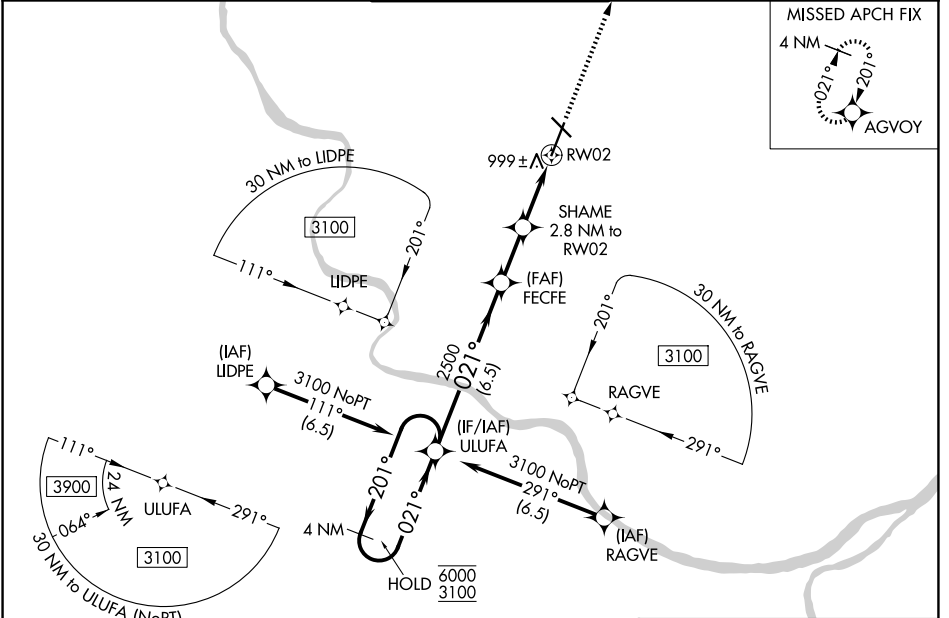
RNP APCH - GPS.

⚠ For uncompensated Baro-VNAV systems, LNAV/VNAV NA below -18°C or above 54°C. For inop ALS, increase LNAV/VNAV all Cats visibility to RVR 4000, and increase LNAV Cat C/D visibility to RVR 5500. Circling NA for Cat D west of Rwy 2 and 13.
* RVR 1800 authorized with the use of FD or AP or HUD to DA.

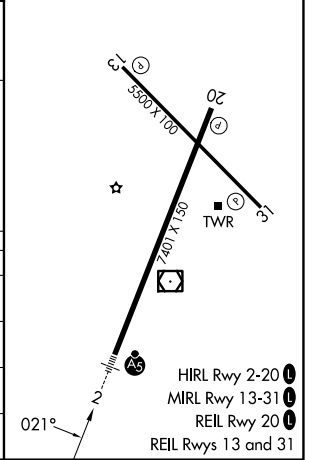
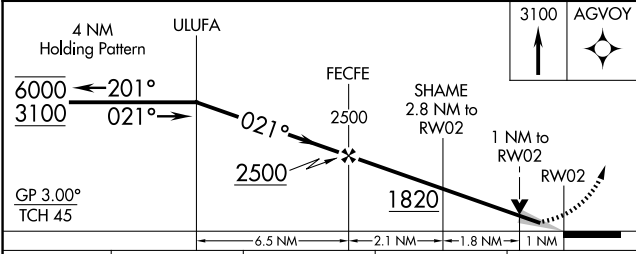
MALSRL 

MISSED APPROACH: Climb to 3100 direct AGVOY and hold.

ATIS 128.45	MIZZU APP CON 124.375 353.925	COLUMBIA TOWER * 119.3 (CTAF) 0 363.25	GND CON 121.6	UNICOM 122.95
-----------------------	---	--	-------------------------	-------------------------



ELEV 889	D TDZE 889
----------	-------------------



CATEGORY	A	B	C	D
LPV DA*	1089/24		200 (200-½)	
LNAV/VNAV DA	1143/24		254 (300-½)	
LNAV MDA	1260/24	371 (400-½)	1260/30	371 (400-¾)
CIRCLING	1300-1 411 (500-1)	1340-1 451 (500-1)	1360-1½ 471 (500-1½)	1440-2 551 (600-2)

NC-3, 14 MAY 2026 to 11 JUN 2026

NC-3, 14 MAY 2026 to 11 JUN 2026