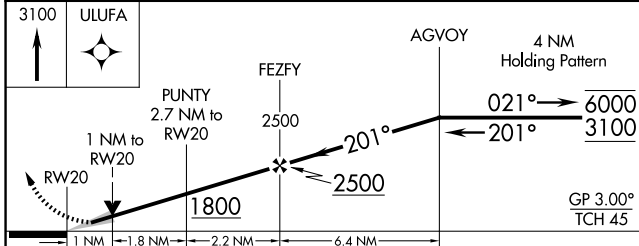
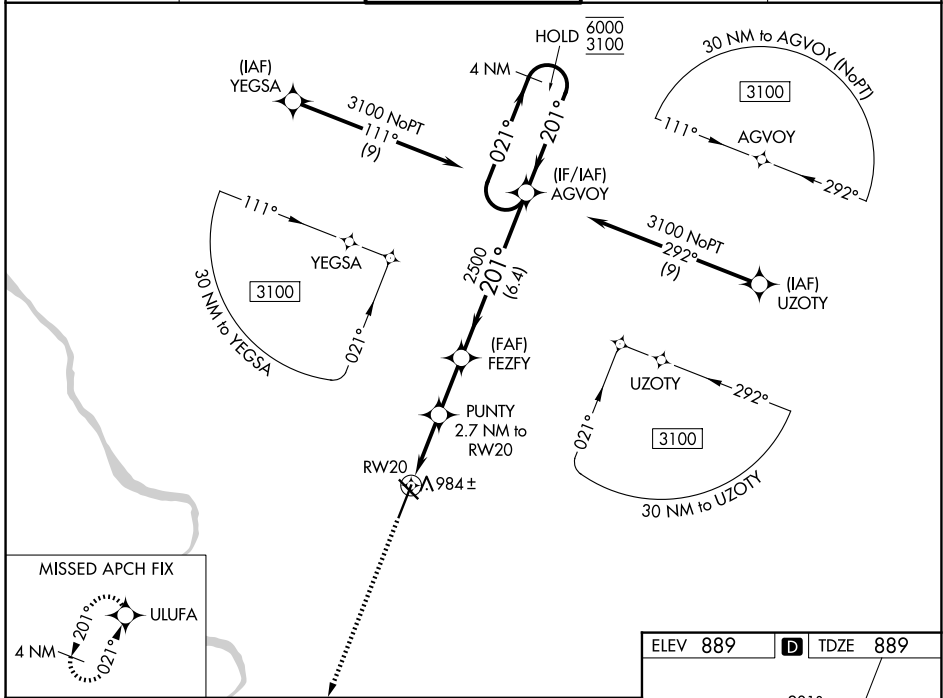


WAAS CH 93599 W20A	APP CRS 201°	Rwy Ldg TDZE Apt Elev	7401 889 889
--	------------------------	-----------------------------	---

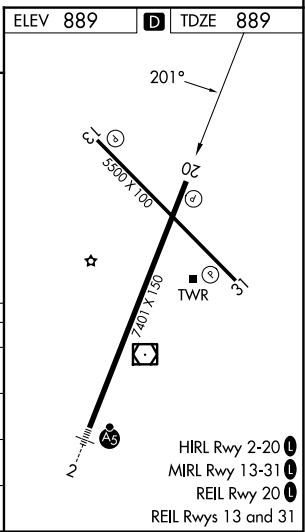
RNAV (GPS) RWY 20

COLUMBIA RGNL (COU)

RNP APCH - GPS.		MISSED APPROACH: Climb to 3100 direct ULUFA and hold.	
<p>⚠ For uncompensated Baro-VNAV systems, LNAV/VNAV NA below -18°C or above 54°C. Circling NA for Cat D west of Rwy 2 and 13.</p>			
ATIS 128.45	MIZZU APP CON 124.375 353.925	COLUMBIA TOWER ★ 119.3 (CTAF) 363.25	GND CON 121.6
		UNICOM 122.95	



CATEGORY	A	B	C	D
LPV DA		1139-¾	250 (300-¾)	
LNAV/VNAV DA		1145-¾	256 (300-¾)	
LNAV MDA		1240-1	351 (400-1)	
CIRCLING	1300-1 411 (500-1)	1340-1 451 (500-1)	1360-1½ 471 (500-1½)	1440-2 551 (600-2)



- HIRL Rwy 2-20 **1**
- MIRL Rwy 13-31 **1**
- REIL Rwy 20 **1**
- REIL Rws 13 and 31 **1**

NC-3, 14 MAY 2026 to 11 JUN 2026

NC-3, 14 MAY 2026 to 11 JUN 2026