

VOR/DME COU 110.2 Chan 39	APP CRS 196°	Rwy Ldg TDZE 889 Apt Elev 889
---	------------------------	---

VOR Y RWY 20

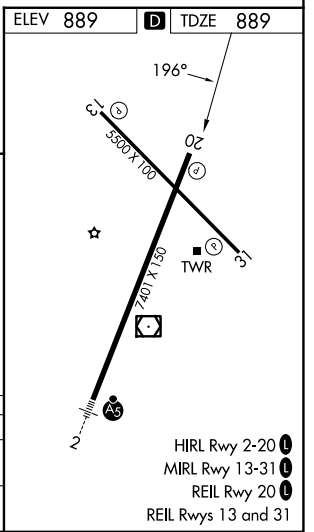
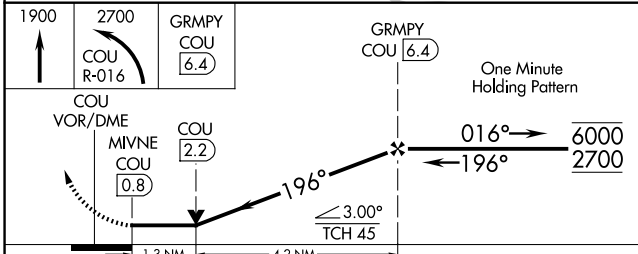
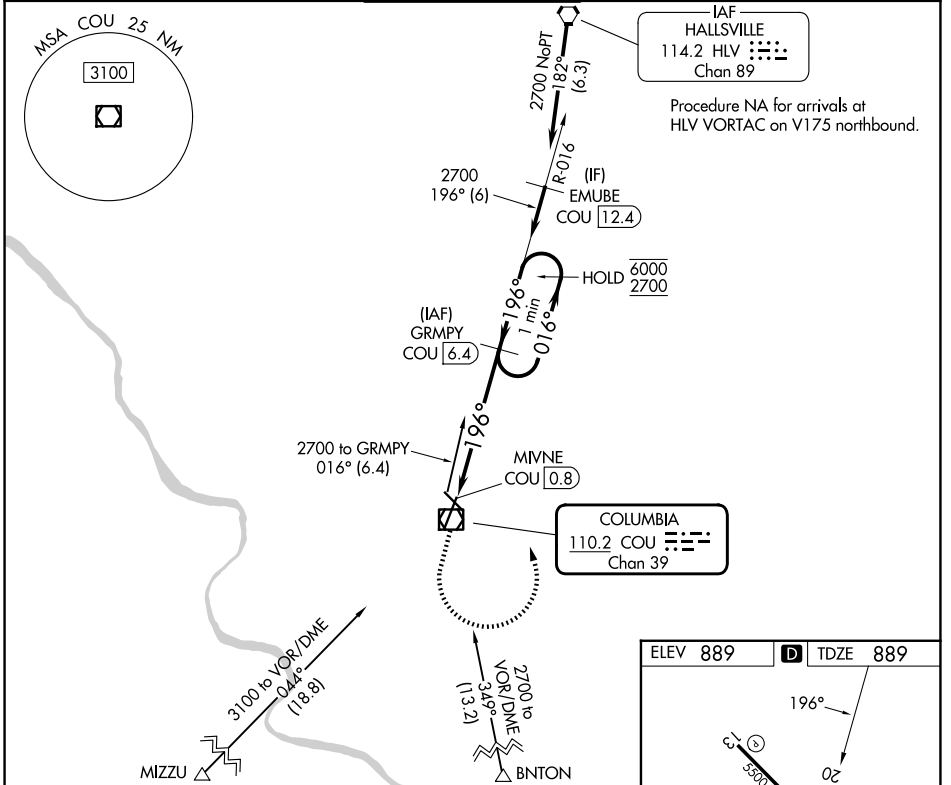
COLUMBIA RGNL (COU)

DME required.

⚠ Circling NA for Cat D west of Rwy 2 and 13.

MISSED APPROACH: Climb to 1900 then climbing left turn to 2700 on COU VOR/DME R-016 to GRMPY/COU 6.4 DME and hold.

ATIS 128.45	MIZU APP CON 124.375 353.925	COLUMBIA TOWER ★ 119.3 (CTAF) 363.25	GND CON 121.6	UNICOM 122.95
-----------------------	--	---	-------------------------	-------------------------



CATEGORY	A	B	C	D
S-20	1360-1	471 (500-1)	1360-1 $\frac{3}{8}$	471 (500-1 $\frac{3}{8}$)
CIRCLING	1360-1	471 (500-1)	1360-1 $\frac{1}{2}$ 471 (500-1 $\frac{1}{2}$)	1440-2 551 (600-2)

NC-3, 14 MAY 2026 to 11 JUN 2026

NC-3, 14 MAY 2026 to 11 JUN 2026