

(FOXHL1.FOXHL) 24193

AL-5596 (FAA)

EASTON/NEWNAM FLD (ESN)

# FOXHL ONE DEPARTURE (RNAV)

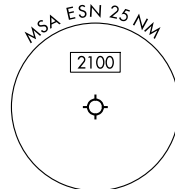
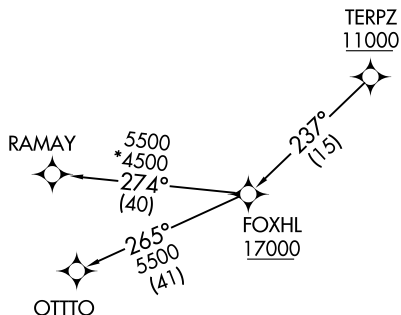
EASTON, MARYLAND

POTOMAC DEP CON  
133.75 254.35  
ATIS  
124.475  
CLNC DEL  
119.075  
GND CON  
119.075  
EASTON TOWER ★  
118.525

RNAV 1 - DME/DME/IRU or GPS.

RADAR required.

**TOP ALTITUDE:  
17000**



NOTE: Jet aircraft only.

### TAKEOFF MINIMUMS:

Rwys 4, 15, 33: Standard.  
Rwy 22: 300-2 or Standard with minimum climb  
of 210'/NM to 400.



NOTE: Chart not to scale.



## DEPARTURE ROUTE DESCRIPTION

Climb on assigned heading for RADAR vectors to cross TERPZ at or above 11000, thence....

....then on track 237° to cross FOXHL at or above 17000, then on assigned transition. Maintain 17000, expect filed altitude 10 minutes after departure.

OTTTO TRANSITION (FOXHL1.OTTTO)

RAMAY TRANSITION (FOXHL1.RAMAY)

FOXHL ONE DEPARTURE (RNAV)  
(FOXHL1.FOXHL) 11JUL24

EASTON, MARYLAND  
EASTON/NEWNAM FLD (ESN)

NE-3, 14 MAY 2026 to 11 JUN 2026

NE-3, 14 MAY 2026 to 11 JUN 2026