

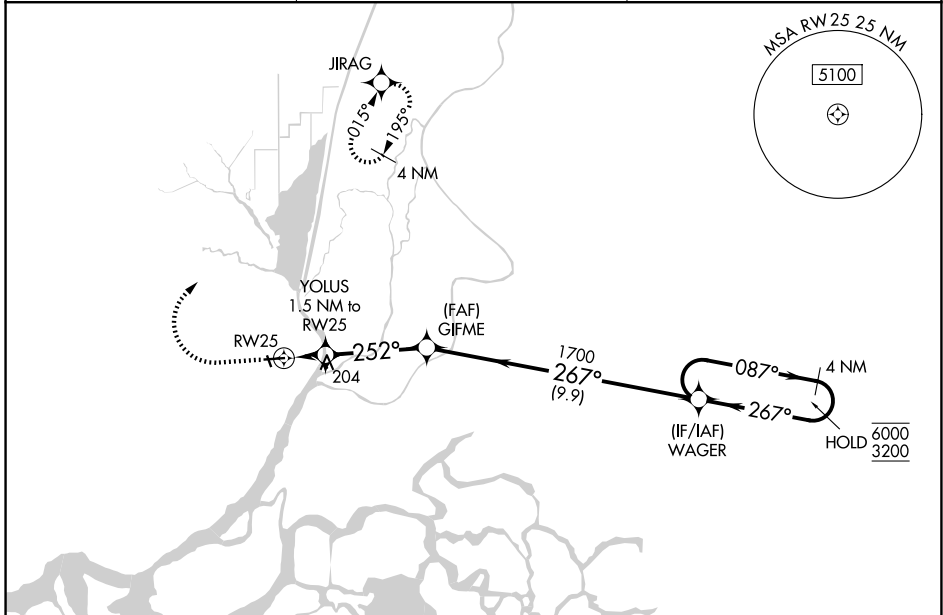
WAAS CH 82325 W25A	APP CRS 252°	Rwy Ldg TDZE Apt Elev	4199 23 23
--	------------------------	-----------------------------	---------------------------------------

RNAV (GPS) RWY 25

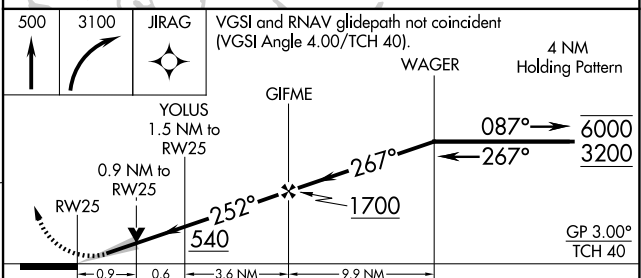
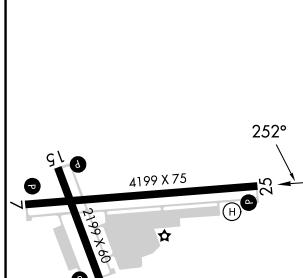
RIO VISTA MUNI (O88)

RNP APCH - GPS.	<p>MISSED APPROACH: Climb to 500 then climbing right turn to 3100 direct JIRAG and hold, continue climb-in-hold to 3100.</p>
<p>NA Circling Rwy 33 NA at night. For uncompensated Baro-VNAV systems, LNAV/VNAV NA below -15°C or above 54°C.</p>	

AWOS-AV 127.075	TRAVIS APP CON 119.9 257.9	UNICOM 122.725 (CTAF)
---------------------------	--------------------------------------	---------------------------------



ELEV 23	TDZE 23
---------	---------



CATEGORY	A	B	C	D
LPV DA	223-3/4	200 (200-3/4)		NA
LNAV/VNAV DA	353-1	330 (400-1)		NA
LNAV MDA	460-1	437 (500-1)	460-1 1/4 437 (500-1 1/4)	NA
CIRCLING	460-1 437 (500-1)	600-1 577 (600-1)	940-2 3/4 917 (1000-2 3/4)	NA

REIL Rwy 7, 15, 25 and 33
MIRL Rwy 7-25 and 15-33

SW-2, 14 MAY 2026 to 11 JUN 2026

SW-2, 14 MAY 2026 to 11 JUN 2026