

APP CRS	Rwy Ldg	<b>5425</b>
<b>138°</b>	TDZE	<b>20</b>
	Apt Elev	<b>20</b>

# RNAV (GPS) RWY 14

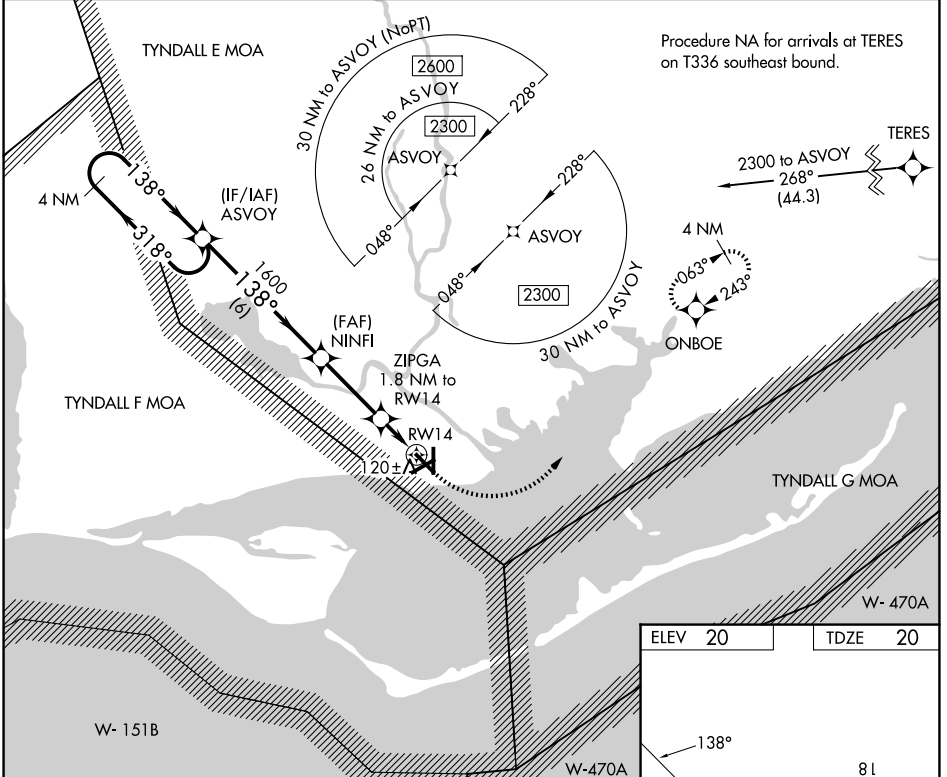
APALACHICOLA RGNL-CLEVE RANDOLPH FLD (AAF)

RNP APCH - GPS

**⚠** Rwy 14 helicopter visibility reduction below  $\frac{3}{4}$  SM NA. When local altimeter setting not received, use ECP altimeter setting and increase all MDAs 140 feet and LNAV visibility Cat C/D  $\frac{3}{8}$  SM, and Circling visibility Cat C/D  $\frac{1}{2}$  SM. Circling Rwy 6, 18, 24, 32, 36 NA at night.

**MISSED APPROACH:** Climb to 500 then climbing left turn to 3000 direct ONBOE and hold, continue climb-in-hold to 3000.

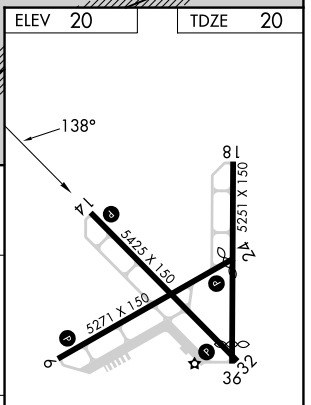
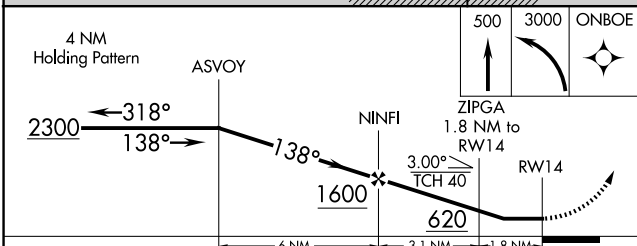
ASOS <b>119.925</b>	TYNDALL APP CON ★ <b>124.15</b>	UNICOM <b>122.8 (CTAF)</b>
------------------------	------------------------------------	-------------------------------



Procedure NA for arrivals at TERES on T336 southeast bound.

SE-3, 14 MAY 2026 to 11 JUN 2026

SE-3, 14 MAY 2026 to 11 JUN 2026



CATEGORY	A	B	C	D
LNAV MDA	400-1	380 (400-1)	400-1 $\frac{1}{8}$	380 (400-1 $\frac{1}{8}$ )
CIRCLING	520-1	500 (500-1)	680-1 $\frac{3}{4}$ 660 (700-1 $\frac{3}{4}$ )	680-2 660 (700-2)

MIRL Rwys 6-24 and 14-32

# RNAV (GPS) RWY 14