

APP CRS	Rwy Ldg	<b>5054</b>
<b>243°</b>	TDZE	<b>20</b>
	Apt Elev	<b>20</b>

# RNAV (GPS) RWY 24

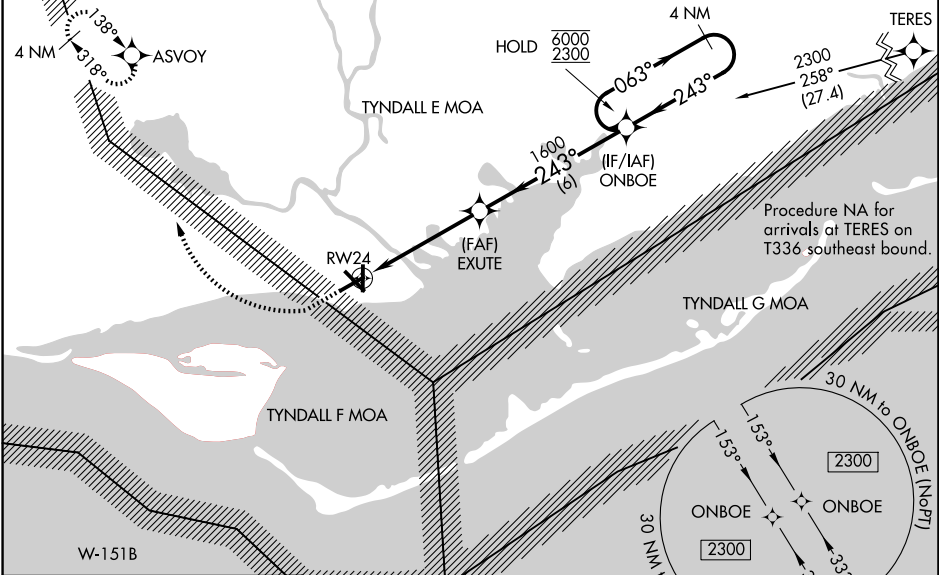
APALACHICOLA RGNL-CLEVE RANDOLPH FLD (AAF)

RNP APCH - GPS.

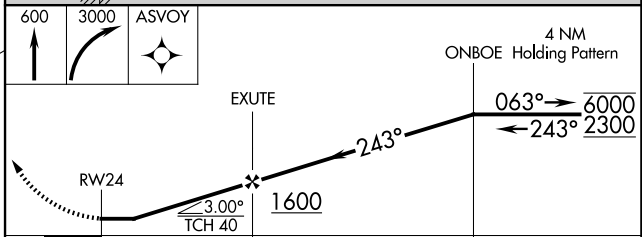
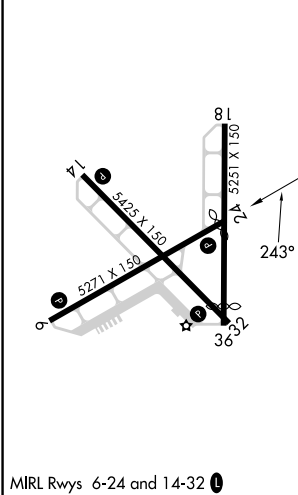
**⚠** Rwy 24 helicopter visibility reduction below 1 SM NA. Straight-in Rwy 24 NA at night, Circling Rwy 6, 18, 24, 32, 36 NA at night. When local altimeter setting not received, use ECP altimeter setting and increase all MDAs 140 feet and LNAV visibility Cat C/D  $\frac{3}{4}$  SM, and Circling visibility Cat C/D  $\frac{1}{2}$  SM.

**MISSED APPROACH:** Climb to 600 then climbing right turn to 3000 direct ASVOY and hold, continue climb-in-hold to 3000.

ASOS <b>119.925</b>	TYNDALL APP CON ★ <b>124.15</b>	UNICOM <b>122.8 (CTAF)</b>
------------------------	------------------------------------	-------------------------------



ELEV 20	TDZE 20
---------	---------



CATEGORY	A	B	C	D
LNAV MDA	500-1	480 (500-1)	500- $\frac{1}{3}$	480 (500- $\frac{1}{3}$ )
CIRCLING	520-1	500 (500-1)	680- $\frac{1}{4}$ 660 (700- $\frac{1}{4}$ )	680-2 660 (700-2)

# RNAV (GPS) RWY 24

SE-3, 14 MAY 2026 to 11 JUN 2026

SE-3, 14 MAY 2026 to 11 JUN 2026