

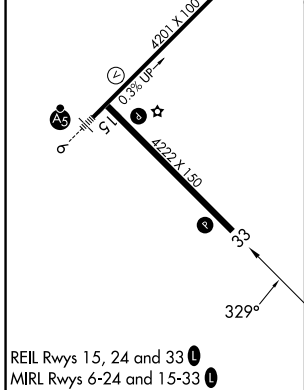
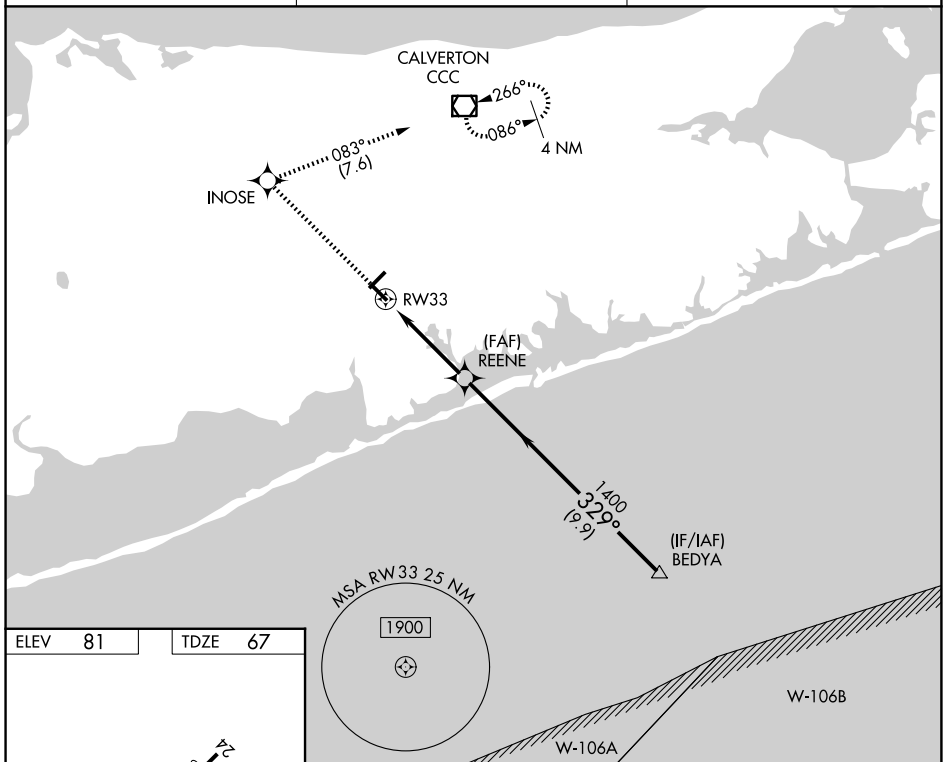
WAAS CH <b>40412</b> <b>W33A</b>	APP CRS <b>329°</b>	Rwy Ldg <b>4222</b> TDZE <b>67</b> Apt Elev <b>81</b>
----------------------------------------	------------------------	-------------------------------------------------------------

# RNAV (GPS) RWY 33

BROOKHAVEN (HWV)

RNP APCH - GPS.	MISSED APPROACH: Climb to 2000 direct INOSE and right turn on track 083° and to CCC VOR/DME and hold.
⚠ For uncompensated Baro-VNAV systems, LNAV/VNAV NA below -15°C or above 54°C. ⚠ Circling Rwy 6, 15 NA at night. Rwy 33 helicopter visibility reduction below ¾ SM NA.	

ASOS <b>119.625</b>	NEW YORK APP CON <b>120.05 343.75</b>	UNICOM <b>122.8 (CTAF) 0</b>
------------------------	------------------------------------------	---------------------------------



2000	INOSE	CCC	BEDYA	
↑	⬠	⬠ tr 083°	⬠	
	1.2 NM to RWY 33	1400	4000	
	RWY 33	REENE		
	1.2 NM	2.8 NM	9.9 NM	
		1400	GP 3.00° TCH 46	
CATEGORY	A	B	C	D
LPV DA	346-1	279 (300-1)		NA
LNAV/VNAV DA	449-1½	382 (400-1½)		NA
LNAV MDA	500-1	433 (500-1)		NA
CIRCLING	560-1	479 (500-1)		NA

NE-2, 14 MAY 2026 to 11 JUN 2026

NE-2, 14 MAY 2026 to 11 JUN 2026