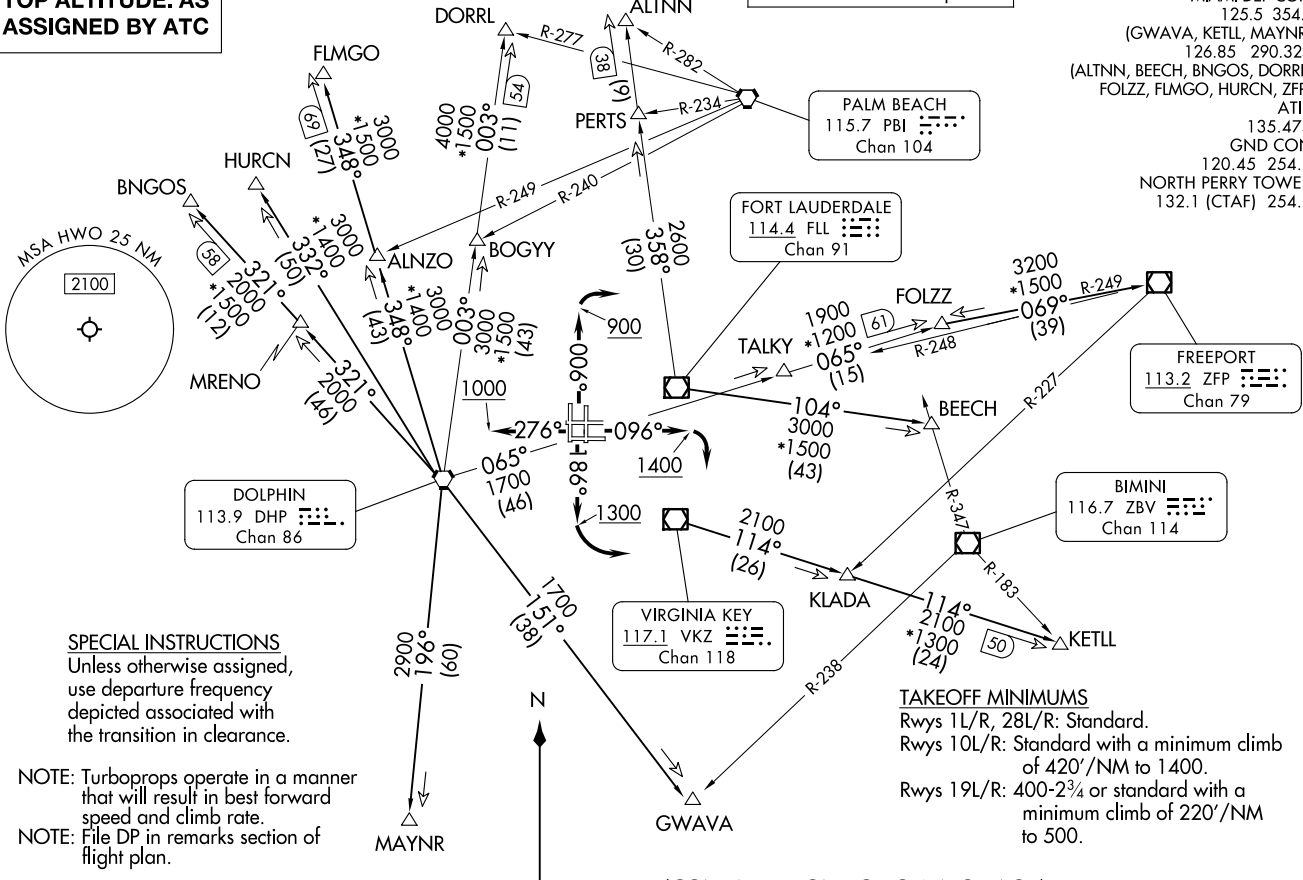


MIAMI TWO DEPARTURE
HOLLYWOOD, FLORIDA
NORTH PERRY (HWO)
(MIA2.MIA) 26DEC24

TOP ALTITUDE: AS ASSIGNED BY ATC

RADAR and DME required.

MIAMI DEP CON
125.5 354.1
(GWAVA, KETLL, MAYNR)
126.85 290.325
(ALTNN, BEECH, BNGOS, DORRL,
FOLZZ, FLMGO, HURCN, ZFP)
ATIS
135.475
GND CON
120.45 254.3
NORTH PERRY TOWER*
132.1 (CTAF) 254.3



SPECIAL INSTRUCTIONS
Unless otherwise assigned,
use departure frequency
depicted associated with
the transition in clearance.

NOTE: Turboprops operate in a manner
that will result in best forward
speed and climb rate.

NOTE: File DP in remarks section of
flight plan.

NOTE: Chart not to scale.

TAKEOFF MINIMUMS
Rwys 1L/R, 28L/R: Standard.
Rwys 10L/R: Standard with a minimum climb
of 420'/NM to 1400.
Rwys 19L/R: 400-2¾ or standard with a
minimum climb of 220'/NM
to 500.

(CONTINUED ON FOLLOWING PAGE)

(MIA2.MIA) 26331
MIAMI TWO DEPARTURE
AL-5606 (FAA)
NORTH PERRY (HWO)
HOLLYWOOD, FLORIDA

MIAMI TWO DEPARTURE



DEPARTURE ROUTE DESCRIPTION

TAKEOFF RUNWAYS 1L/R: Climb on heading 006° to 900 before turning right, thence...
TAKEOFF RUNWAYS 10L/R: Climb on heading 096° to 1400 before turning right, thence...
TAKEOFF RUNWAYS 19L/R: Climb on heading 186° to 1300 before turning left, thence...
TAKEOFF RUNWAYS 28L/R: Climb on heading 276° to 1000, thence...

... on transition, maintain ATC assigned altitude. Expect filed altitude 10 minutes after departure.

ALTNN TRANSITION (MIA2.ALTNN): From over FLL VOR/DME on FLL R-358 to ALTNN.

BEECH TRANSITION (MIA2.BEECH): From over FLL VOR/DME on FLL R-104 to BEECH.

BNGOS TRANSITION (MIA2.BNGOS): From over DHP VORTAC on DHP R-321 to BNGOS.

DORRL TRANSITION (MIA2.DORRL): From over DHP VORTAC on DHP R-003 to DORRL.

FLMGO TRANSITION (MIA2.FLMGO): From over DHP VORTAC on DHP R-348 to FLMGO.

FOLZZ TRANSITION (MIA2.FOLZZ): From over DHP VORTAC on DHP R-065 to FOLZZ.

FREEPORT TRANSITION (MIA2.ZFP): From over DHP VORTAC on DHP R-065 to FOLZZ then on ZFP R-249 to ZFP VOR/DME.

GWAVA TRANSITION (MIA2.GWAVA): From over DHP VORTAC on DHP R-151 to GWAVA.

HURCN TRANSITION (MIA2.HURCN): From over DHP VORTAC on DHP R-332 to HURCN.

KETLL TRANSITION (MIA2.KETLL): From over VKZ VOR/DME on VKZ R-114 to KETLL.

MAYNR TRANSITION (MIA2.MAYNR): From over DHP VORTAC on DHP R-196 to MAYNR.

SE-3, 14 MAY 2026 to 11 JUN 2026

SE-3, 14 MAY 2026 to 11 JUN 2026