

WAAS CH <b>99302</b> <b>W01A</b>	APP CRS <b>010°</b>	Rwy Idg TDZE Apt Elev	<b>5001</b> <b>1255</b> <b>1255</b>
--	------------------------	-----------------------------	---

# RNAV (GPS) RWY 1

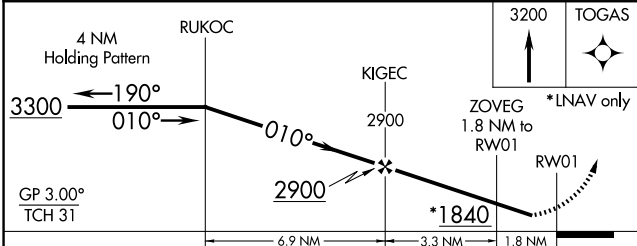
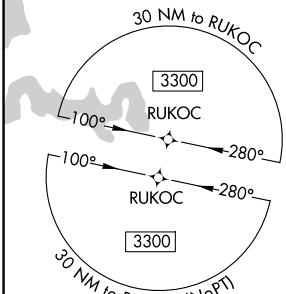
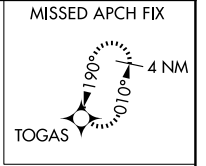
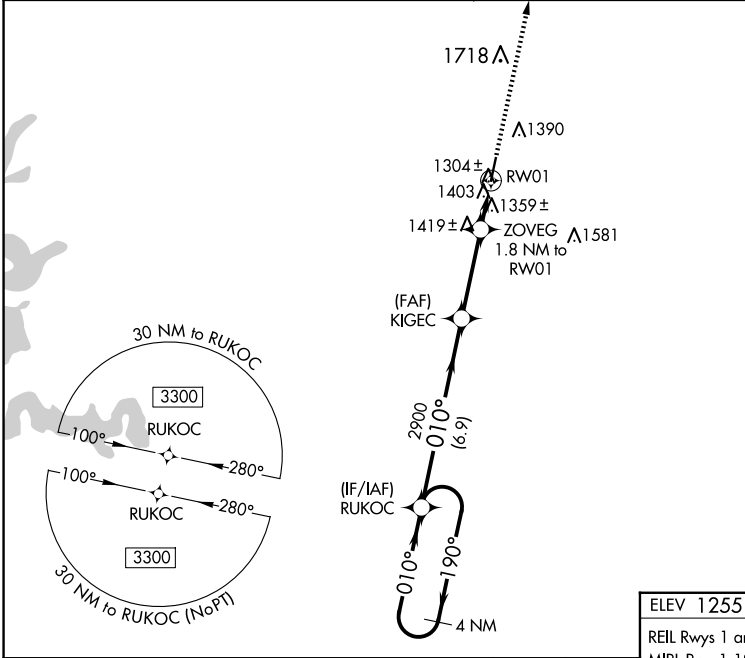
NEOSHO HUGH ROBINSON (E/O S)

**⚠** Baro-VNAV NA when using Joplin altimeter setting. For uncompensated Baro-VNAV systems, LNAV/VNAV NA below -17°C (2°F) or above 54°C (130°F). DME/DME RNP-0.3 NA.  
**⚠** Visibility reduction by helicopters NA. When local altimeter setting not received, use Joplin altimeter setting and increase all DA 87 feet and all MDA 100 feet; increase LPV all Cats visibility 1/8 mile, LNAV/VNAV all Cats visibility 3/8 mile, and LNAV Cat C visibility 1/4 mile. When VGSI inop, Straight-in/Circling to Rwy 1 NA at night.

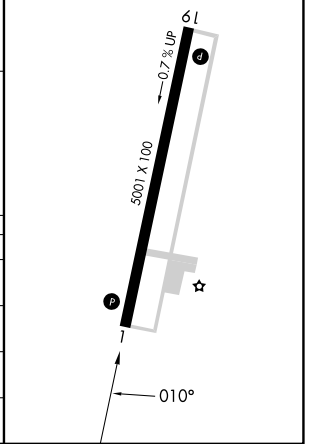
**MISSED APPROACH:**  
Climb to 3200 direct TOGAS and hold.

KANSAS CITY CENTER  
**128.6 282.325**

AUNICOM  
**122.8 (CTAF)**



ELEV 1255	TDZE 1255
REIL Rwys 1 and 19	
MIRL Rwy 1-19	



CATEGORY	A	B	C	D
LPV DA	1505-1	250 (300-1)		NA
LNAV/VNAV DA	1658-1 3/8	403 (500-1 3/8)		NA
LNAV MDA	1680-1	425 (500-1)	1680-1 1/4 425 (500-1 1/4)	NA
CIRCLING	1720-1 465 (500-1)	1740-1 485 (500-1)	1740-1 1/2 485 (500-1 1/2)	NA

NC-3, 14 MAY 2026 to 11 JUN 2026

NC-3, 14 MAY 2026 to 11 JUN 2026