

WAAS CH 56522 W19A	APP CRS 190°	Rwy Idg TDZE Apt Elev	5001 1245 1255
--	------------------------	-----------------------------	---

RNAV (GPS) RWY 19

NEOSHO HUGH ROBINSON (E/O S)

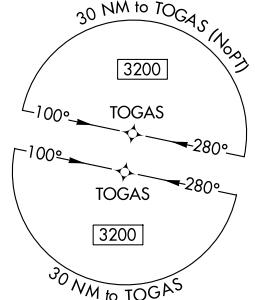
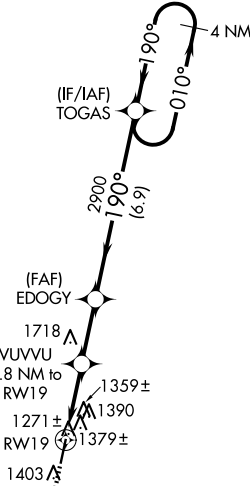
⚠ When VGSJ inop, Circling Rwy 1 NA at night. For uncompensated Baro-VNAV systems, LNAV/VNAV NA below -17°C (2°F) or above 54°C (130°F). DME/DME RNP-0.3 NA. Visibility reduction by helicopters NA. When local altimeter setting not received, use Joplin altimeter setting and increase all DA 87 feet and all MDA 100 feet; increase LPV all Cats visibility 1/8 mile, LNAV/VNAV all Cats visibility 3/8 mile, and LNAV Cat C visibility 1/2 mile. VDP and Baro-VNAV NA when using Joplin altimeter setting.

MISSED APPROACH: Climb to 3300 direct RUKOC and hold.

KANSAS CITY CENTER
128.6 282.325

AUNICOM
122.8(CTAF) 0

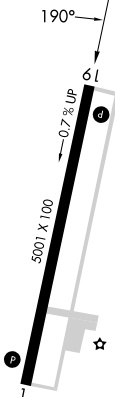
△ 2056



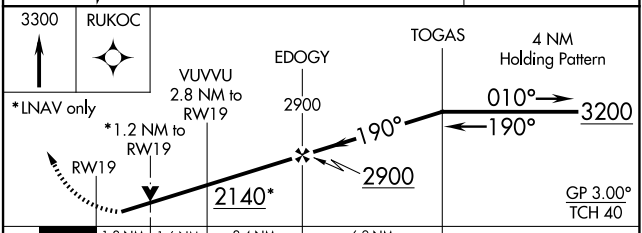
NC-3, 14 MAY 2026 to 11 JUN 2026

NC-3, 14 MAY 2026 to 11 JUN 2026

ELEV 1255 TDZE 1245



REIL Rwy 1 and 19
MIRL Rwy 1-19



CATEGORY	A	B	C	D
LPV DA	1495-1	250 (300-1)		NA
LNAV/VNAV DA	1692-1½	447 (500-1½)		NA
LNAV MDA	1640-1	395 (400-1)	1640-1¼ 395 (400-1¼)	NA
CIRCLING	1720-1 465 (500-1)	1740-1 485 (500-1)	1740-1½ 485 (500-1½)	NA