

# RNAV (GPS) RWY 24

LAKEWOOD (N12)

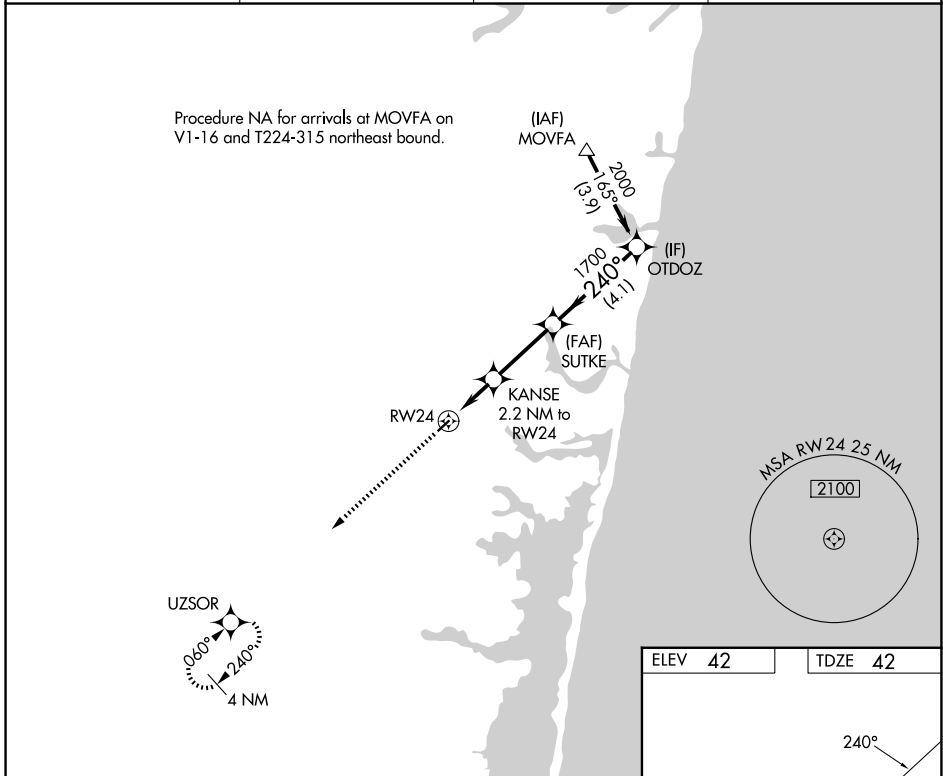
APP CRS <b>240°</b>	Rwy Ldg TDZE Apt Elev	<b>2987</b> <b>42</b> <b>42</b>
------------------------	-----------------------------	---------------------------------------

RNP APCH - GPS.

**▽** Rwy 24 helicopter visibility reduction below 1 SM NA.  
**△** NA Straight-in Rwy 24 NA at night, Circling Rwy 24 NA at night.

MISSED APPROACH: Climb to 2000 direct UZSOR and hold.

AWOS-AV <b>122.8</b>	MC GUIRE APP CON <b>126,475 363,8</b>	GCO <b>121.725</b>	UNICOM <b>122.8 (CTAF)</b>
-------------------------	--	-----------------------	-------------------------------



NE-2, 14 MAY 2026 to 11 JUN 2026

NE-2, 14 MAY 2026 to 11 JUN 2026

