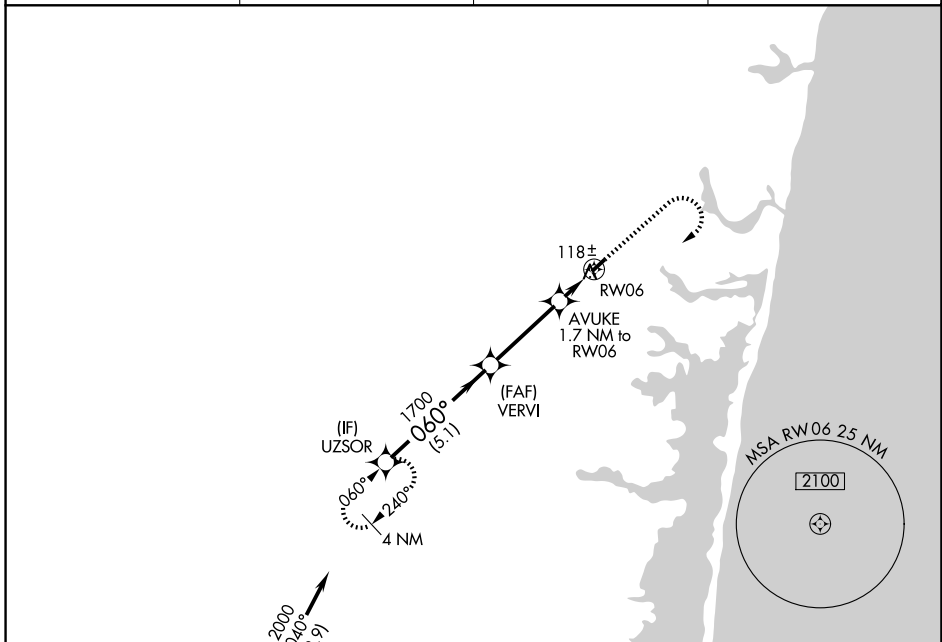


WAAS CH 49038 W06A	APP CRS 060°	Rwy Ldg TDZE Apt Elev	2726 41 42
--	------------------------	-----------------------------	---------------------------------------

RNAV (GPS) RWY 6

LAKEWOOD (N12)

RNP APCH - GPS.		MISSED APPROACH: Climb to 1000 then climbing right turn to 2000 direct UZSOR and hold.	
<p>▼ Circling Rwy 24 NA at night.</p> <p>▲ NA Rwy 6 helicopter visibility reduction below 3/4 SM NA.</p>			
AWOS-AV 122.8	MC GUIRE APP CON 126.475 363.8	GCO 121.725	UNICOM 122.8 (CTAF)



NE-2, 14 MAY 2026 to 11 JUN 2026

NE-2, 14 MAY 2026 to 11 JUN 2026

ELEV 42		TDZE 41	
<p>Procedure NA for arrival on CYN VORTAC airway radials 046 CW 100.</p>			
<p>VGSI and descent angles not coincident (VGSI Angle 3.00/TCH 15).</p>		1000	2000
		UZSOR	
<p>5.1 NM 3.4 NM 0.7 NM 1 NM</p>			
CATEGORY	A	B	D
LP MDA	380-1	339 (400-1)	NA
LNNAV MDA	580-1	539 (600-1)	NA
CIRCLING	580-1 538 (600-1)	620-1 578 (600-1)	NA