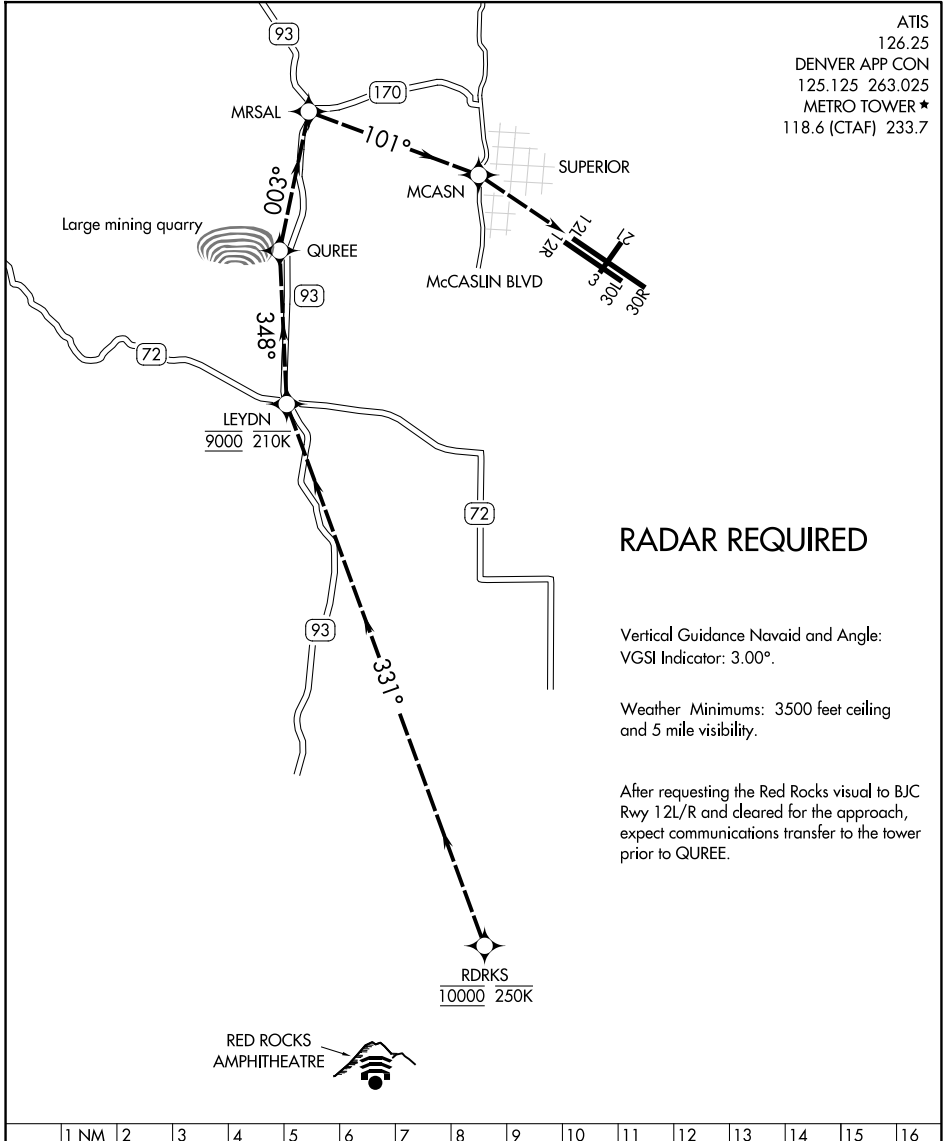


RED ROCKS VISUAL RWY 12L/R

ROCKY MOUNTAIN METRO (BJC)
DENVER, COLORADO



ATIS
126.25
DENVER APP CON
125.125 263.025
METRO TOWER ★
118.6 (CTAF) 233.7

RADAR REQUIRED

Vertical Guidance Navaid and Angle:
VGS1 Indicator: 3.00°.

Weather Minimums: 3500 feet ceiling
and 5 mile visibility.

After requesting the Red Rocks visual to BJC
Rwy 12L/R and cleared for the approach,
expect communications transfer to the tower
prior to QUREE.



SW-1, 14 MAY 2026 to 11 JUN 2026

SW-1, 14 MAY 2026 to 11 JUN 2026

1 NM	2	3	4	5	6	7	8	9	10	11	12	13	14	15	16
------	---	---	---	---	---	---	---	---	----	----	----	----	----	----	----

RED ROCKS VISUAL RWY 12L/R

Procedure NA at night.

Aircraft arriving BJC from the south can expect vectors to RDRKS for the RED ROCK VISUAL RWY 12L/R. In the event of a go around, turn left heading 030°, climb and maintain 7000 or as directed by ATC.

RED ROCKS VISUAL RWY 12L/R

DENVER, COLORADO
ROCKY MOUNTAIN METRO (BJC)