

WAAS CH 48809 W29A	APP CRS 288°	Rwy Ldg TDZE 790 Apt Elev 790	5001 790 790
--	------------------------	---	---

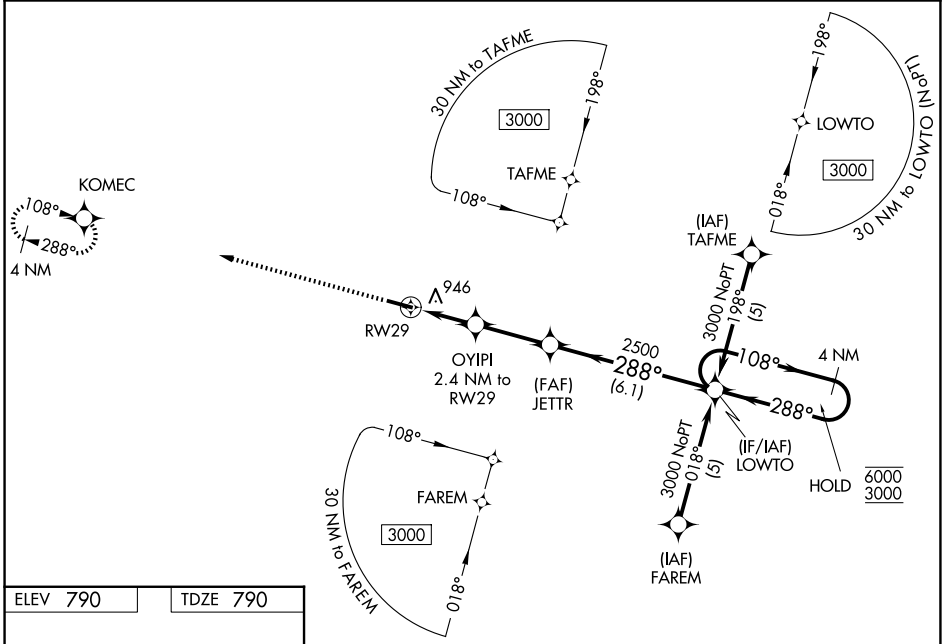
RNAV (GPS) RWY 29

FULTON COUNTY (R.C.R)

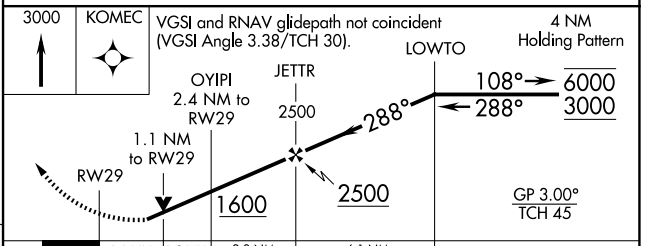
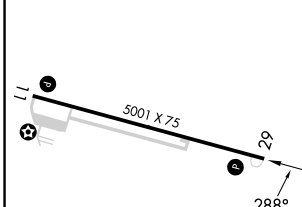
RNP APCH - GPS.	MISSED APPROACH: Climb to 3000 direct KOME C and hold.
-----------------	--

Baro-VNAV and VDP NA when using GSH altimeter setting. For uncompensated Baro-VNAV systems, LNAV/VNAV NA below -16°C or above 54°C. Rwy 29 helicopter visibility reduction below ¼ SM NA. When local altimeter setting not received, use GSH altimeter setting and increase LPV DA to 1208 feet and all visibilities ⅛ SM. Increase LNAV/VNAV DA to 1281 feet and all visibilities ¼ SM. Increase all MDAs 100 feet and visibility Cats C/D ¼ SM.

AWOS-3 118.775	SOUTH BEND APP CON★ 132.05 257.8	UNICOM 122.7 (CTAF) 0
--------------------------	--	--



ELEV 790	TDZE 790
----------	----------



CATEGORY	A	B	C	D
LPV DA		1127-1	337 (400-1)	
LNAV/VNAV DA		1200-1⅛	410 (500-1⅛)	
LNAV MDA	1200-1	410 (500-1)	1200-1⅛	410 (500-1⅛)
CIRCLING	1300-1 510 (600-1)	1380-1 590 (600-1)	1480-2 690 (700-2)	1620-2¾ 830 (900-2¾)

REIL Rwy 11 and 29 **0**
MIRL Rwy 11-29 **0**

EC-2, 14 MAY 2026 to 11 JUN 2026

EC-2, 14 MAY 2026 to 11 JUN 2026