

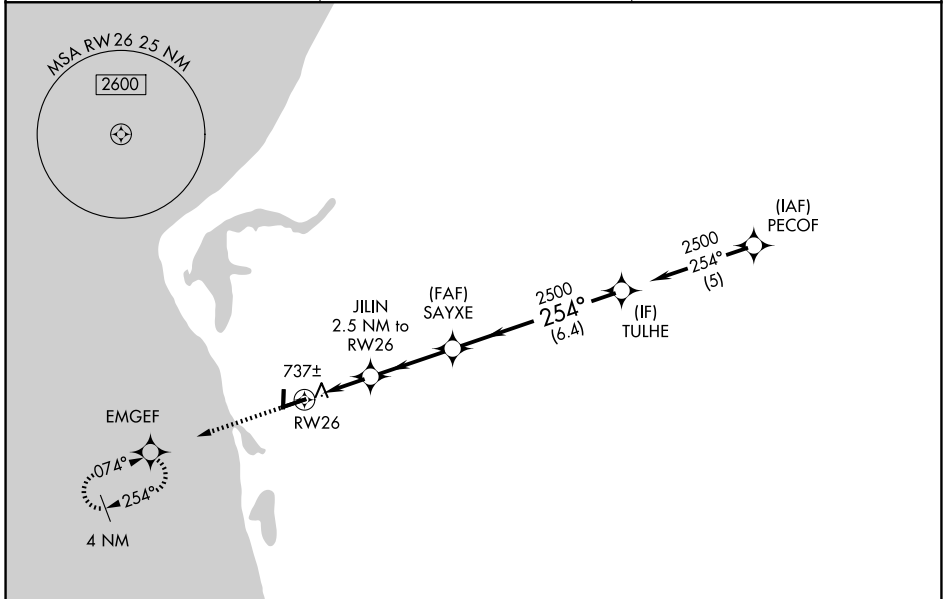
WAAS CH <b>49206</b> <b>W26A</b>	APP CRS <b>254°</b>	Rwy Ldg TDZE <b>647</b> Apt Elev <b>647</b>	<b>5003</b>
--	------------------------	---	-------------

# RNAV (GPS) RWY 26

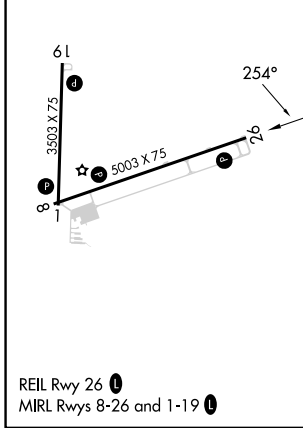
MASON COUNTY (LDM)

RNP APCH-GPS.		MISSED APPROACH: Climb to 2500 direct EMGEF and hold.
<p><b>⚠</b> Circling Rwy 1, 19 NA at night. Rwy 26 helicopter visibility reduction below ¾ SM NA. For uncompensated Baro-VNAV systems, LNAV/VNAV NA below -16°C or above 54°C.</p>		

AWOS-3P <b>119,925</b>	MINNEAPOLIS CENTER <b>120.85 322.35</b>	UNICOM <b>123.0 (CTAF) 0</b>
---------------------------	--	---------------------------------



ELEV <b>647</b>	TDZE <b>647</b>
-----------------	-----------------



2500	EMGEF	VGSI and RNAV glidepath not coincident (VGSI Angle 3.00/TCH 25).			
		JILIN 2.5 NM to RW26	SAYXE 2500	TULHE	2500
		1.1 NM to RW26	1.4 NM	3.1 NM	6.4 NM
		1.1	1.4	3.1	6.4
CATEGORY		A	B	C	D
LPV DA			975-1	328 (400-1)	
LNAV/VNAV DA			1020-1	373 (400-1)	
LNAV MDA			1020-1	373 (400-1)	
CIRCLING		1160-1 513 (600-1)	1200-1 553 (600-1)	1260-1¾ 613 (700-1¾)	1460-2¾ 813 (900-2¾)

EC-1, 14 MAY 2026 to 11 JUN 2026

EC-1, 14 MAY 2026 to 11 JUN 2026