

LOC/DME I-PSG 110.5 Chan 42	APP CRS 164°	Rwy Ldg TDZE Apt Elev 113	N/A N/A 113
---	------------------------	---	--

LDA-D
PETERSBURG JAMES A JOHNSON (PSG) (PAPG)

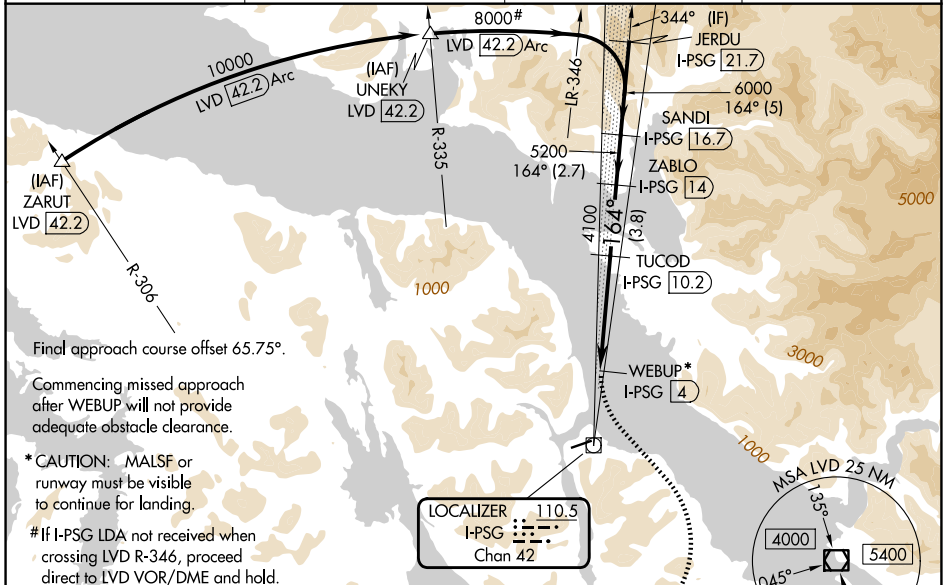
DME required.

V
A
38 -10°C

Circling NA southeast of Rwy 5-23. Circling Rwy 5 NA at night. When local altimeter setting not received, use WRG/PAWG altimeter setting and increase all MDAs 80 feet.

MISSED APPROACH: Climbing left turn to 4000 on heading 117° then climbing right turn to 7000 on LVD VOR/DME R-019 to LVD VOR/DME and hold, continue climb-in-hold to 7000.

AWOS-3P 125.8	ANCHORAGE CENTER 118.0	SITKA RADIO 122.35	CTAF 122.50
-------------------------	----------------------------------	------------------------------	-----------------------

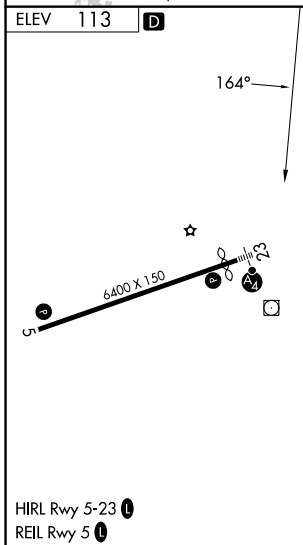


Final approach course offset 65.75°.

Commencing missed approach after WEBUP will not provide adequate obstacle clearance.

*CAUTION: MALSF or runway must be visible to continue for landing.

If I-PSG LDA not received when crossing LVD R-346, proceed direct to LVD VOR/DME and hold.



ELEV 113 D	LEVEL ISLAND LVD 116.5 Chan 112			MISSED APCH FIX	
4000	7000	LVD R-019	LVD	Use I-PSG DME when on the localizer course.	JERDU I-PSG [21.7]
hdg 117°				SANDI I-PSG [16.7]	
		*WEBUP I-PSG [4]	TUCOD I-PSG [10.2]	ZABLO I-PSG [14]	
			4100	5200	6000
	6.2 NM	3.8 NM	2.7 NM	5 NM	
CATEGORY	A	B	C	D	
CIRCLING	1800-5 1687 (1700-5)	1880-5 1767 (1800-5)	3080-5 2967 (3000-5)	NA	

AK, 14 MAY 2026 to 09 JUL 2026

AK, 14 MAY 2026 to 09 JUL 2026