

WAAS CH <b>93732</b> <b>W32A</b>	APP CRS <b>322°</b>	Rwy Ldg TDZE <b>1130</b> Apt Elev <b>1136</b>
--	------------------------	---

# RNAV (GPS) RWY 32

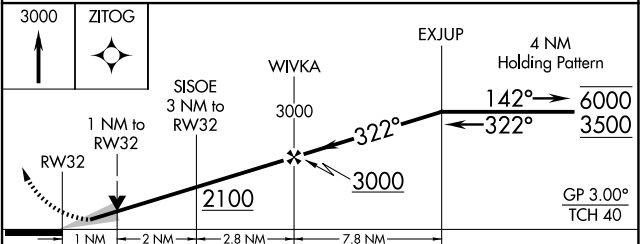
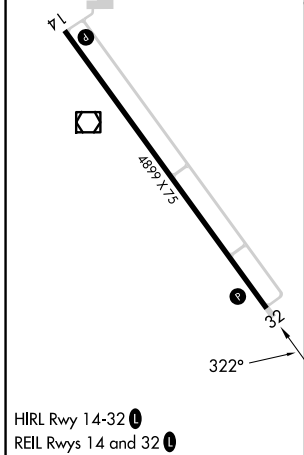
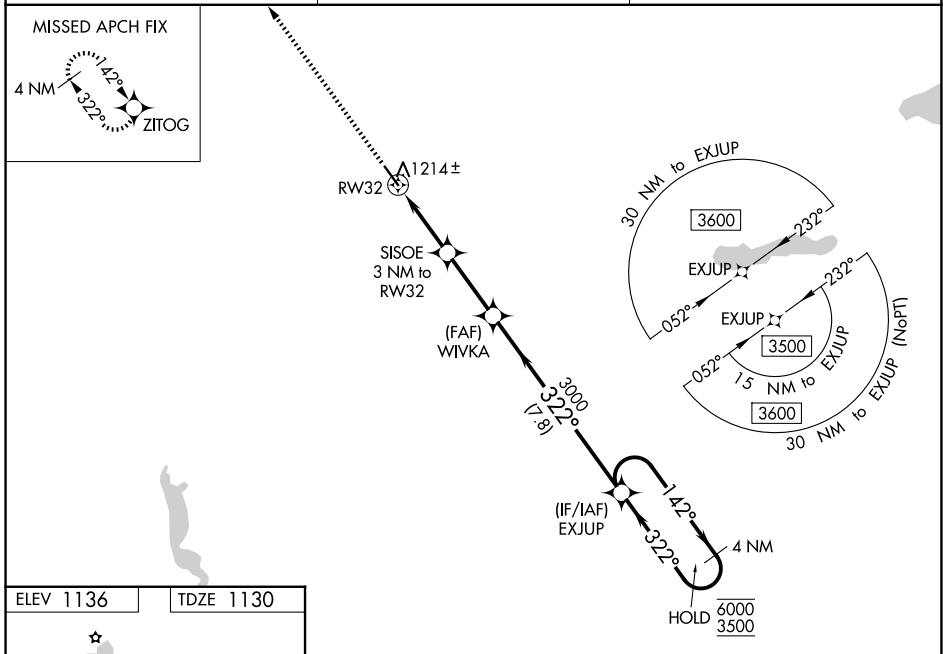
MORRIS MUNI/CHARLIE SCHMIDT FLD (MOX)

RNP APCH - GPS.

Baro-VNAV and VDP NA when using BBB altimeter setting. For uncompensated Baro-VNAV systems, LNAV/VNAV NA below -17°C or above 54°C. When local altimeter setting not received, use BBB altimeter setting and increase LPV DA to 1380 feet and LNAV/VNAV DA to 1477 feet. Increase all MDAs 60 feet and visibility LNAV Cat C ½ SM and visibility Circling Cat C ¼ SM.

MISSED APPROACH: Climb to 3000 direct ZITOG and hold.

AWOS-3PT <b>118.6</b>	MINNEAPOLIS CENTER <b>126.1 269.2</b>	UNICOM <b>122.8 (CTAF) 1</b>
--------------------------	--	---------------------------------



CATEGORY	A	B	C	D
LPV DA		1330-1	200 (200-1)	NA
LNAV/VNAV DA		1419-1	289 (300-1)	NA
LNAV MDA		1480-1	350 (400-1)	NA
CIRCLING	1560-1	1600-1	1860-2	NA
	424 (500-1)	464 (500-1)	724 (800-2)	

NC-1, 14 MAY 2026 to 11 JUN 2026

NC-1, 14 MAY 2026 to 11 JUN 2026