

LOC I-MJX 109.9	APP CRS 063°	Rwy Ldg TDZE Apt Elev	5835 81 86
---------------------------	------------------------	-----------------------------	---------------------------------------

ILS or LOC RWY 6

OCEAN COUNTY (MJX)

⚠ Circling Rwy 14, 32 NA at night. Inop table does not apply to S-ILS 6. For inop ALS, increase S-LOC 6 Cats A/B and S-LOC 6 XOQR Fix minimums Cats A/B visibility to 1. **⚠ NA** When local altimeter setting not received, use Mc Guire Fld (Joint Base Mc Guire Dix Lakehurst) altimeter setting and increase all DA 41 feet and all MDA 60 feet; increase S-LOC 6 Cats C/D and Circling Cat C visibility ½ mile, Cat D ¼ mile; increase XOQR Fix minimums S-LOC 6 Cat C/D visibility ½ mile and Circling Cat D ¼ mile. For inop ALS when using Mc Guire Fld (Joint Base Mc Guire Dix Lakehurst) altimeter setting, increase S-ILS 6 all Cats visibility to ¾ and S-LOC 6 Cats A/B and S-LOC 6 XOQR Fix minimums Cats A/B visibility to 1, Cats C/D visibility to 1 ½. Rwy 6 helicopter visibility reduction below ¾ SM NA.

MALSRL

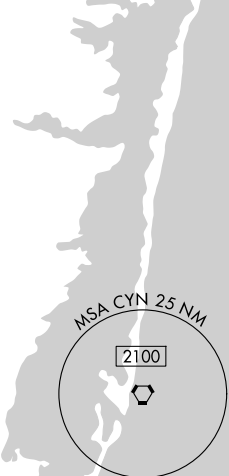
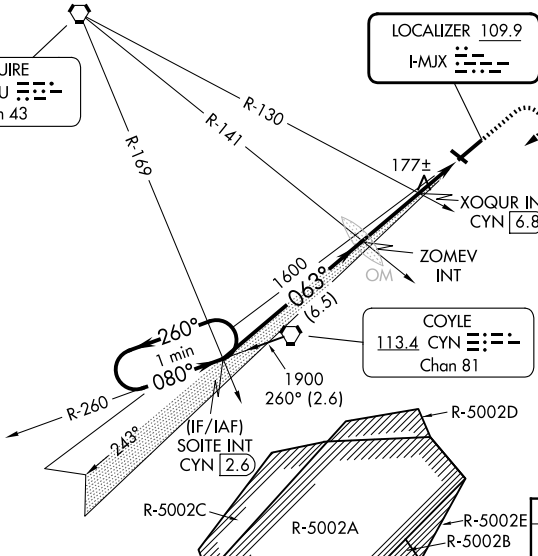


MISSED APPROACH:
Climb to 600 then climbing right turn to 1900 direct CYN VORTAC then on CYN R-260 to SOITE INT/CYN 2.6 DME and hold.

AWOS-3PT
119.875

MC GUIRE APP CON
126.475 363.8

UNICOM
122.7 (CTAF) 1



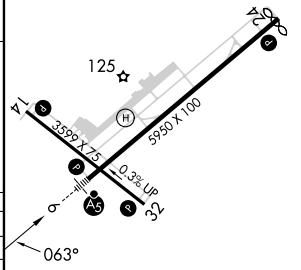
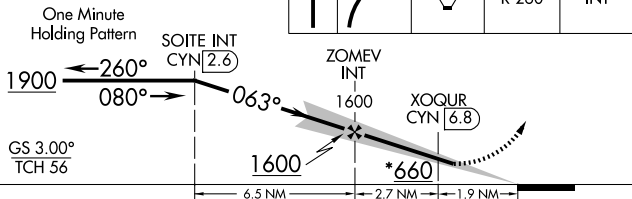
NE-2, 14 MAY 2026 to 11 JUN 2026

NE-2, 14 MAY 2026 to 11 JUN 2026

ELEV 86 **D** TDZE 81

*720 when using Joint Base Mc Guire Dix Lakehurst altimeter setting.

600	1900	CYN	CYN R-260	SOITE INT



CATEGORY	A	B	C	D
S-ILS 6		331-¾	250 (300-¾)	
S-LOC 6	660-¾	579 (600-¾)	660-1¼	579 (600-1¼)
CIRCLING	660-1	574 (600-1)	574 (600-1¾)	614 (700-2)
XOQR FIX MINIMUMS (DUAL VOR RECEIVERS or DME REQUIRED)				
S-LOC 6	520-¾	439 (500-¾)	520-7/8	439 (500-7/8)
CIRCLING	540-1	560-1	580-1½	700-2
	454 (500-1)	474 (500-1)	494 (500-1½)	614 (700-2)

MIRL Rwy 14-32 **1**
HIRL Rwy 6-24 **1**
REIL Rws 14, 24 and 32 **1**

FAF to MAP 4.6 NM

Knots	60	90	120	150	180
Min:Sec	4:36	3:04	2:18	1:50	1:32