

| | | |
|--|------------------------|---|
| WAAS CH 56208 W26A | APP CRS 257° | Rwy Ldg 4002 TDZE 1224 Apt Elev 1228 |
|--|------------------------|---|

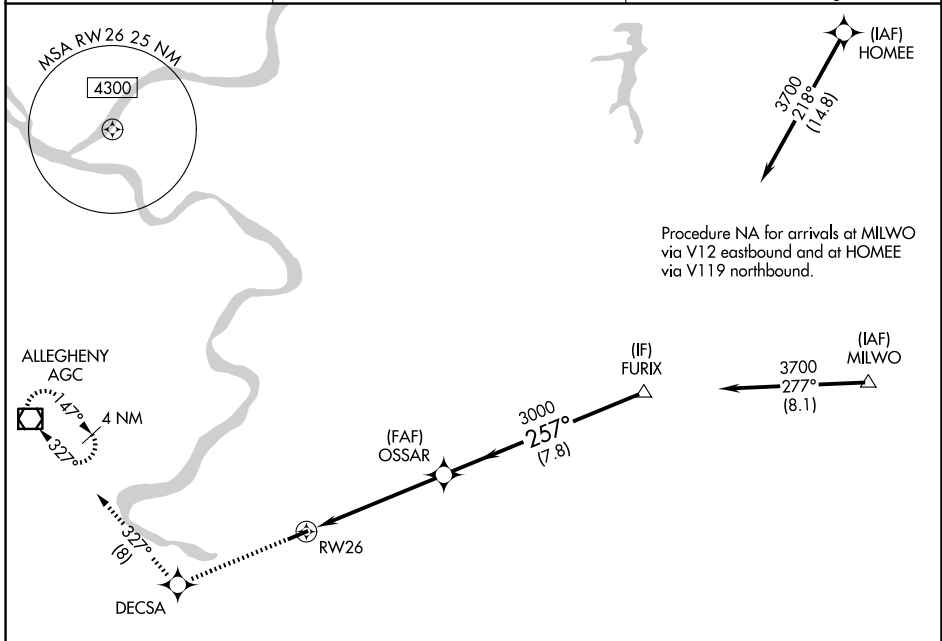
RNAV (GPS) RWY 26

ROSTRAVER (FWQ)

⚠ DME/DME RNP-0.3 NA. When local altimeter setting not received, use Allegheny County altimeter setting and increase all DA/MDA 40 feet, and increase LNAV Cats C and D visibility to 1½ mile. Rwy 26 helicopter visibility reduction below ¾ SM NA. Rwy 8 helicopter visibility reduction below 1 SM NA. Circling Rwy 8 NA at night.

⚠ MISSED APPROACH: Climb to 3000 direct DECSA, and right turn via 327° track to AGC VOR/DME and hold.

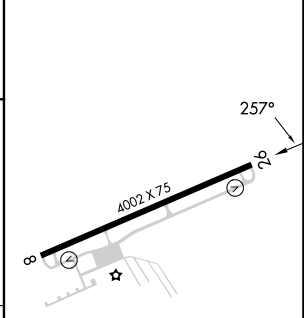
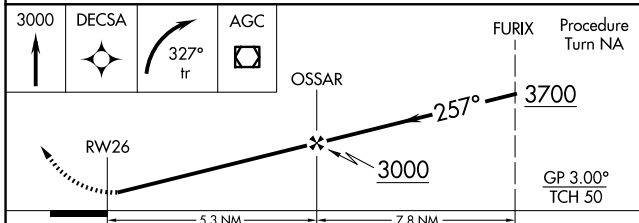
| | | |
|----------------------------|---|---------------------------------|
| AWOS-3PT 118.475 | PITTSBURGH APP CON 119.35 337.4 | UNICOM 122.8 (CTAF) 0 |
|----------------------------|---|---------------------------------|



NE-4, 14 MAY 2026 to 11 JUN 2026

NE-4, 14 MAY 2026 to 11 JUN 2026

| | |
|-----------|-----------|
| ELEV 1228 | TDZE 1224 |
|-----------|-----------|



| CATEGORY | A | B | C | D |
|--------------|-----------------------|-----------------------|-------------------------|-------------------------|
| LPV DA | | 1500-1 | 276 (300-1) | |
| LNAV/VNAV DA | | NA | | |
| LNAV MDA | | 1600-1 | 376 (400-1) | |
| CIRCLING | 1700-1 472 (500-1) | 1760-1 532 (600-1) | 1760-1½ 532 (600-1½) | 1920-2¼ 692 (700-2¼) |

MIRL Rwy 8-26 0
REIL Rwys 8 and 26 0