

WAAS CH 50309 W22A	APP CRS 218°	Rwy Idg TDZE Apt Elev	5420 161 163
--	------------------------	-----------------------------	---

RNAV (GPS) RWY 22

MC MINNVILLE MUNI (MMV)

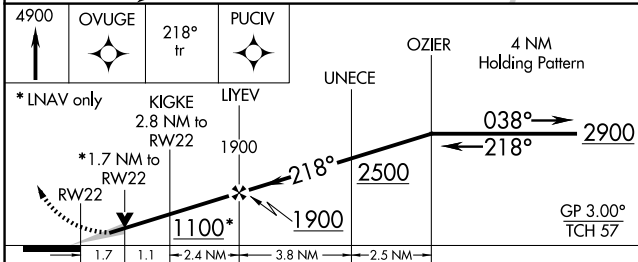
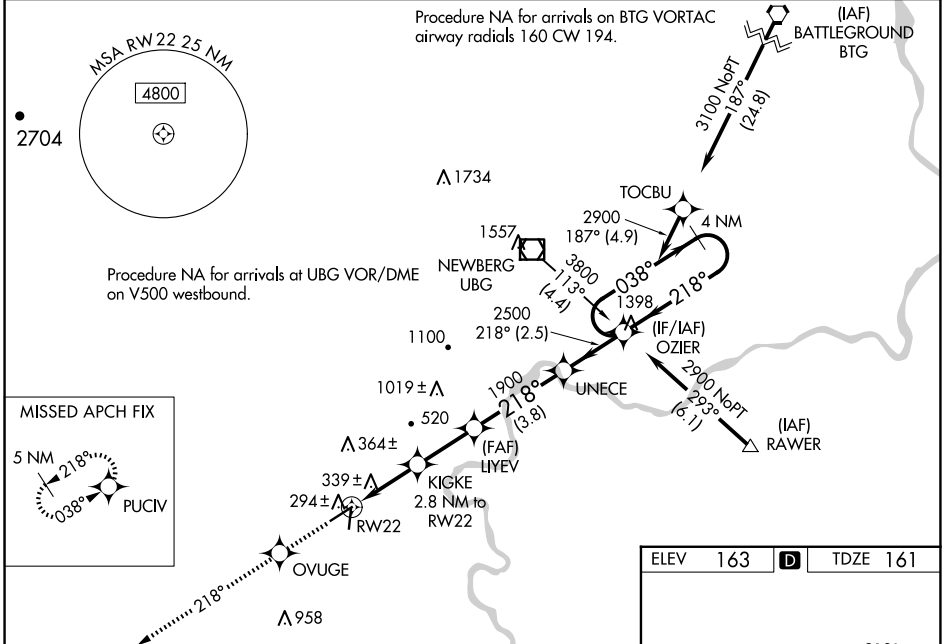
RNP APCH.

⚠ Baro-VNAV NA when using Aurora State altimeter setting. For uncompensated Baro-VNAV systems, LNAV/VNAV NA below -15°C or above 48°C. When local altimeter setting not received, use Aurora State altimeter setting; increase LPV DA to 534 feet, LNAV/VNAV DA to 703 feet; increase all MDAs 60 feet and visibility LNAV Cats C and D ½ SM. For inop ALS, increase LPV all Cats visibility to ¾ SM, LNAV/VNAV all Cats to 1 ½ SM, LNAV Cat A/B to 1 SM and Cat C/D to 1 ½ SM. For inop ALS when using Aurora State altimeter setting, increase LNAV/VNAV all Cats visibility to 1 ½ SM, LNAV Cat A/B to 1 SM and Cat C/D to 1 ½ SM. VDP NA when using Aurora State altimeter setting.

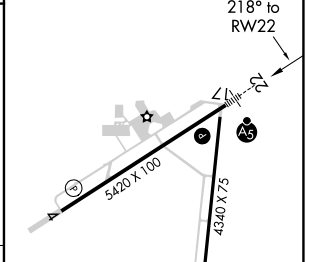
MALSR
AS

MISSED APPROACH:
Climb to 4900 direct OVUGE then on 218° track to PUCIV and hold, continue climb-in-hold to 4900.

ASOS 135.675	PORTLAND APP CON 126.0 284.6 (NORTH)	SEATTLE CENTER 125.8 291.7 (SOUTH)	CLNC DEL 118.35	UNICOM 123.0 (CTAF) 1
------------------------	--	--	---------------------------	--



ELEV 163	D	TDZE 161
----------	----------	----------



CATEGORY	A	B	C	D
LPV DA	474-¾ 313 (400-¾)			
LNAV/VNAV DA	643-1¼ 482 (500-1¼)			
LNAV MDA	740-¾ 579 (600-¾)		740-1¼ 579 (600-1¼)	

REIL Rwy 4 **1**

HIRL Rwy 4-22 **1**

NW-1, 14 MAY 2026 to 11 JUN 2026

NW-1, 14 MAY 2026 to 11 JUN 2026