

| | | | |
|--|------------------------|-----------------------------|---|
| WAAS CH 82531 W09A | APP CRS 089° | Rwy Ldg TDZE Apt Elev | 5100 706 706 |
|--|------------------------|-----------------------------|---|

RNAV (GPS) RWY 9

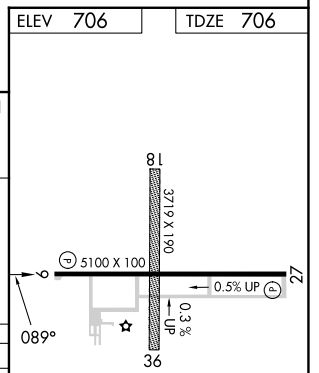
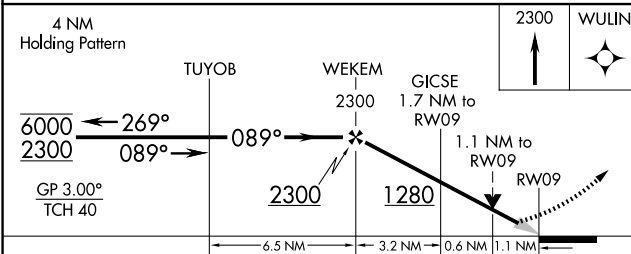
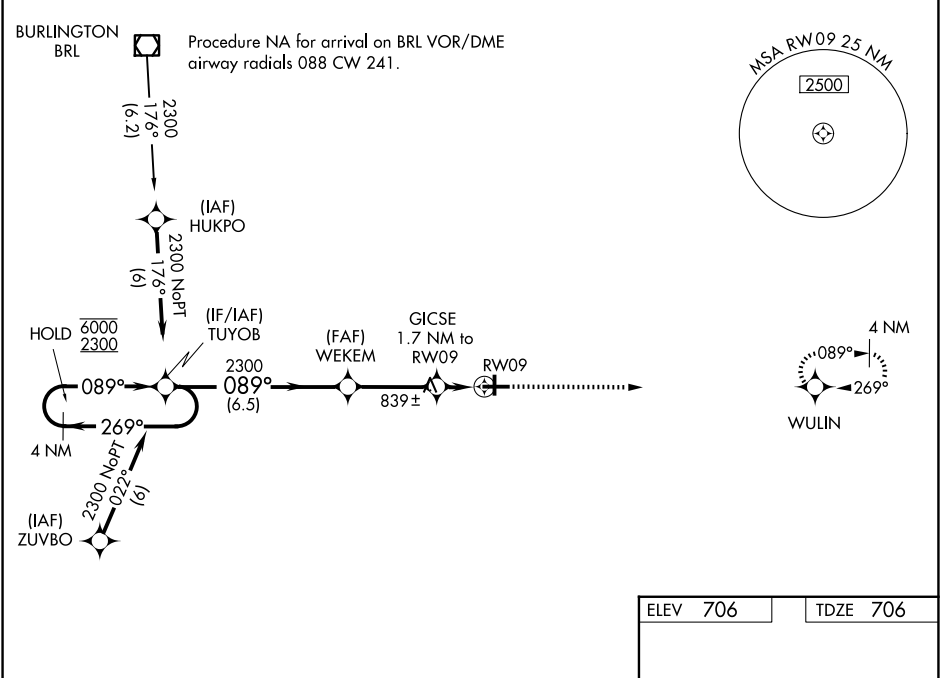
MACOMB MUNI (MQB)

RNP APCH - GPS.

⚠ Circling NA to Rwy's 18 and 36. Baro-VNAV and VDP NA when using Burlington IA altimeter setting. For uncompensated Baro-VNAV systems, LNAV/VNAV NA below -16°C or above 54°C. When local altimeter setting not received, use Burlington IA altimeter setting; increase LPV DA to 969 feet and LNAV/VNAV DA to 1173 feet; increase all MDA 80 feet and visibility Cats C and D ¼ SM.

⚠ MISSED APPROACH: Climb to 2300 direct WULIN and hold.

| | | |
|--------------------------|--------------------------------------|-------------------------------|
| AWOS-3 119.025 | CHICAGO CENTER 135.6 316.1 | UNICOM 122.8 (CTAF) |
|--------------------------|--------------------------------------|-------------------------------|



| CATEGORY | A | B | C | D |
|--------------|-----------------------|------------------------------------|--|--|
| LPV DA | | 906-1 | 200 (200-1) | |
| LNAV/VNAV DA | | 1110-1 ³ / ₈ | 404 (500-1 ³ / ₈) | |
| LNAV MDA | 1100-1 | 394 (400-1) | 1100-1 ¹ / ₈ | 394 (400-1 ¹ / ₈) |
| CIRCLING | 1120-1 414 (500-1) | 1260-1 554 (600-1) | 1520-2 ¹ / ₂ 814 (900-2 ¹ / ₂) | 1520-2 ³ / ₄ 814 (900-2 ³ / ₄) |

REIL Rwy's 9 and 27
HIRL Rwy 9-27

EC-3, 14 MAY 2026 to 11 JUN 2026

EC-3, 14 MAY 2026 to 11 JUN 2026