

WAAS CH 69527 W01A	APP CRS 007°	Rwy Ldg TDZE 2694 Apt Elev 2694	4151 2694 2694
---------------------------------	------------------------	---	---

RNAV (GPS) RWY 1

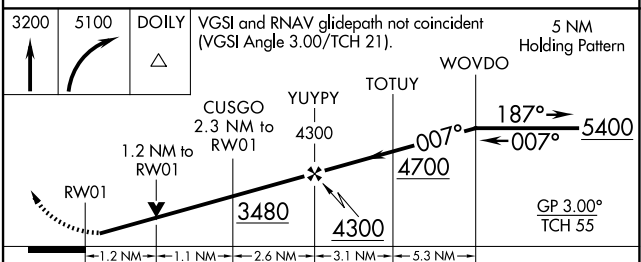
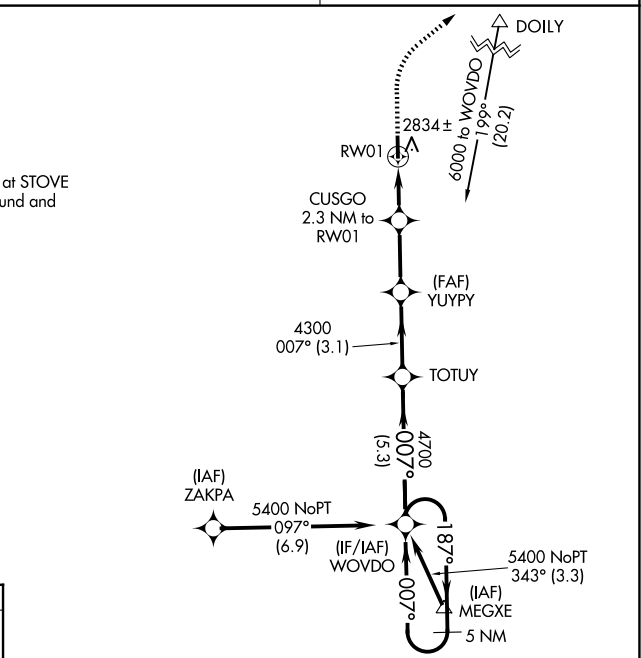
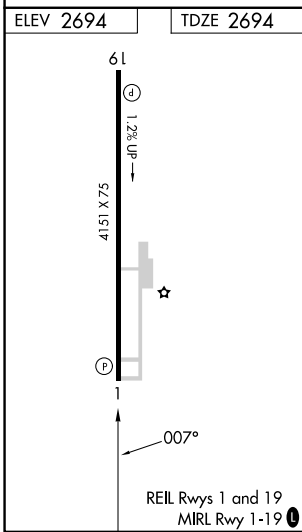
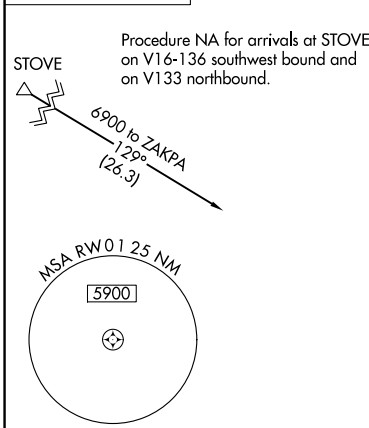
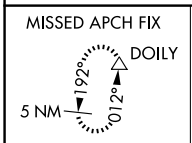
TWIN COUNTY (HLX)

RNP APCH - GPS.

Baro-VNAV NA when using PSK altimeter setting. For uncompensated Baro-VNAV systems, LNAV/VNAV NA below -20°C or above 54°C. Rwy 1 helicopter visibility reduction below ¾ SM NA. VDP NA with PSK altimeter setting. When local altimeter setting not received, use PSK altimeter setting: increase LPV DA to 3103 feet and all visibilities ½ SM; increase LNAV/VNAV DA to 3154 feet and all visibilities ½ SM; increase all MDAs 140 feet and LNAV visibility Cats C and D ½ SM and Circling Cat C ¼ SM.

MISSED APPROACH: Climb to 3200 then climbing right turn to 5100 direct DOILY and hold, continue climb-in-hold to 5100.

AWOS-3 118.375	ROANOKE APP CON 126.0 339.8	UNICOM 122.8 (CTAF)
--------------------------	---------------------------------------	-------------------------------



CATEGORY	A	B	C	D
LPV DA		2965-1	271 (300-1)	
LNAV/VNAV DA		3016-1	322 (400-1)	
LNAV MDA	3100-1	406 (500-1)	3100-1½	406 (500-1½)
CIRCLING	3200-1	506 (600-1)	3200-1½	3680-3
			506 (600-1½)	986 (1000-3)

NE-3, 14 MAY 2026 to 11 JUN 2026

NE-3, 14 MAY 2026 to 11 JUN 2026