

WAAS CH <b>58027</b> <b>W19A</b>	APP CRS <b>187°</b>	Rwy Ldg TDZE Apt Elev	<b>4151</b> <b>2687</b> <b>2694</b>
----------------------------------------	------------------------	-----------------------------	-------------------------------------------

# RNAV (GPS) RWY 19

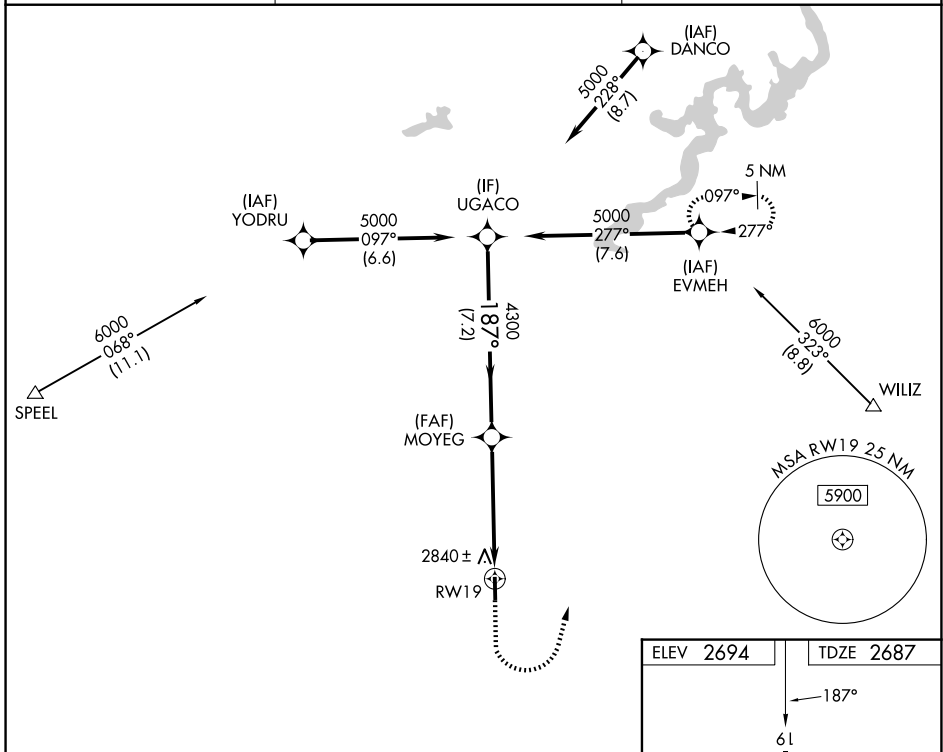
TWIN COUNTY (HLX)

RNP APCH - GPS.

▼ Rwy 19 helicopter visibility reduction below ¼ SM NA. When local altimeter setting not received, use PSK altimeter setting and increase all MDAs 140 feet, increase LP and LNAV visibilities Cats C and D ⅓ SM, and Circling Cat C ¼ SM. VDP NA with PSK altimeter setting.

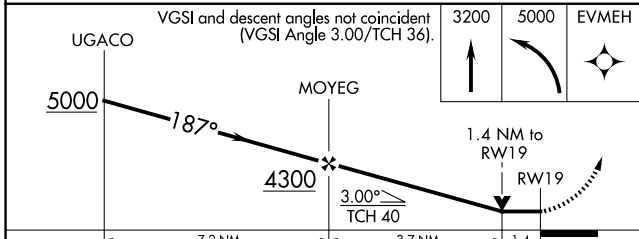
MISSED APPROACH: Climb to 3200 then climbing left turn to 5000 direct EVMEH and hold.

AWOS-3 <b>118.375</b>	ROANOKE APP CON <b>126.0 339.8</b>	UNICOM <b>122.8 (CTAF) 0</b>
--------------------------	---------------------------------------	---------------------------------

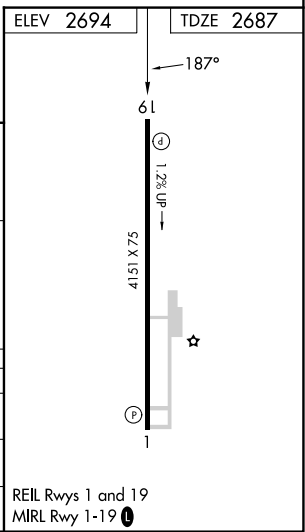


NE-3, 14 MAY 2026 to 11 JUN 2026

NE-3, 14 MAY 2026 to 11 JUN 2026



CATEGORY	A		B		C		D	
	MDA	Alt	MDA	Alt	MDA	Alt	MDA	Alt
LP	3120-1	433 (500-1)	3120-1¼	433 (500-1¼)	3120-1½	506 (600-1½)	3680-3	986 (1000-3)
LNAV	3140-1	453 (500-1)	3140-1⅓	453 (500-1⅓)	3200-1½	506 (600-1½)	3680-3	986 (1000-3)
CIRCLING	3200-1	506 (600-1)						



REIL Rwy 1 and 19  
MIRL Rwy 1-19 0