

WAAS CH 82643 W14A	APP CRS 138°	Rwy Ldg TDZE Apt Elev	5201 1393 1396
--	------------------------	-----------------------------	---

RNAV (GPS) RWY 14

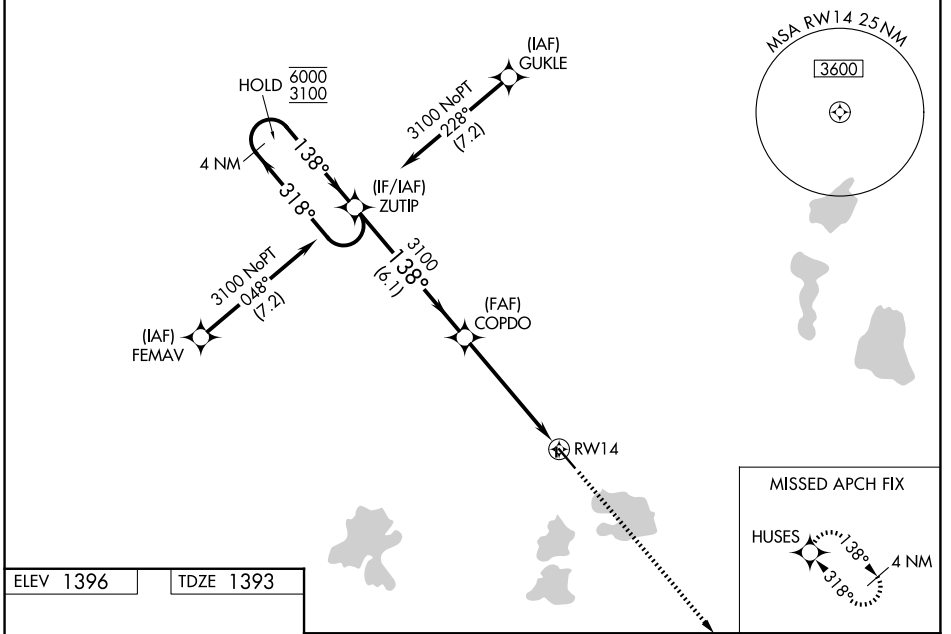
DETROIT LAKES/WETHING FLD (DTL)

RNP APCH.

⚠ Circling NA to Rwy 18 and 36. Baro-VNAV and VDP NA when using Park Rapids altimeter setting. For uncompensated Baro-VNAV systems, LNAV/VNAV NA below -17°C or above 54°C. When local altimeter setting not received, use Park Rapids altimeter setting: increase DA to 1728 feet and all visibilities ¼ SM, increase all MDA 100 feet and visibility Cats C and D ¼ SM.

MISSED APPROACH: Climb to 3100 direct HUSES and hold.

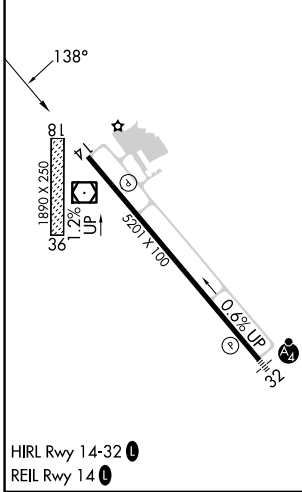
AWOS-3PT 119.075	MINNEAPOLIS CENTER 126.1 269.2	UNICOM 122.8 (CTAF) 0
----------------------------	--	---------------------------------



NC-1, 14 MAY 2026 to 11 JUN 2026

NC-1, 14 MAY 2026 to 11 JUN 2026

ELEV 1396	TDZE 1393
-----------	-----------



	ZUTIP		COPDO		3100	HUSES
	4 NM Holding Pattern				3100	⬆️ ⬇️
	6000	← 318°	→ 138°	3100		*LNAV only
	3100	→ 138°		3100		*1.1 NM to RWY 14
	GP 3.00°					RWY 14
	TCH 43					
			6.1 NM	4.1 NM	1.1	
CATEGORY	A	B	C	D		
LPV DA	1643-1		250 (300-1)			
LNAV/VNAV DA	1643-1		250 (300-1)			
LNAV MDA	1780-1 387 (400-1)		1780-1½ 387 (400-1½)			
CIRCLING	1820-1 424 (500-1)	1860-1 464 (500-1)	2080-2 684 (700-2)	2140-2½ 744 (800-2½)		