

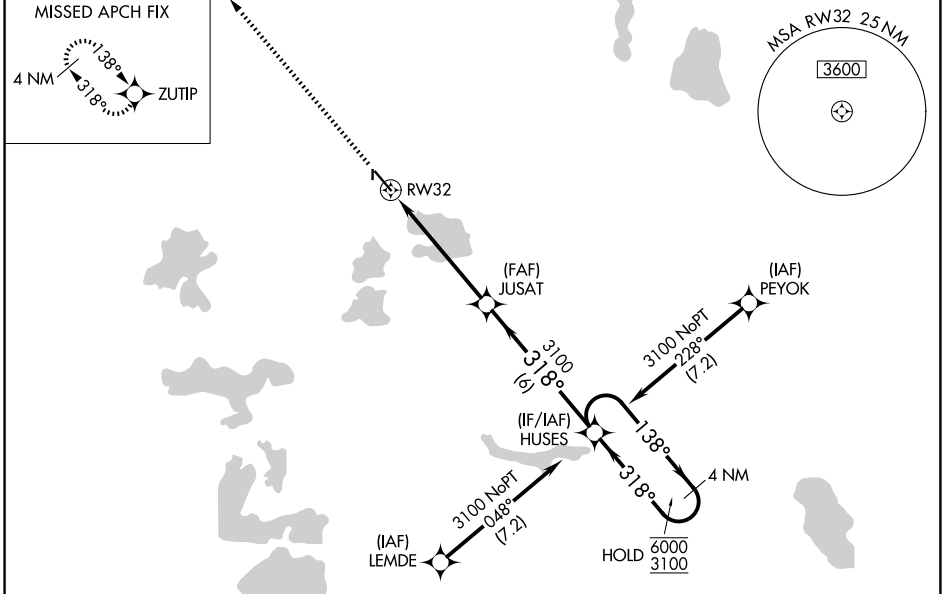
WAAS CH <b>86704</b> <b>W32A</b>	APP CRS <b>318°</b>	Rwy Ldg TDZE Apt Elev	<b>5201</b> <b>1372</b> <b>1396</b>
--	------------------------	-----------------------------	---

# RNAV (GPS) RWY 32

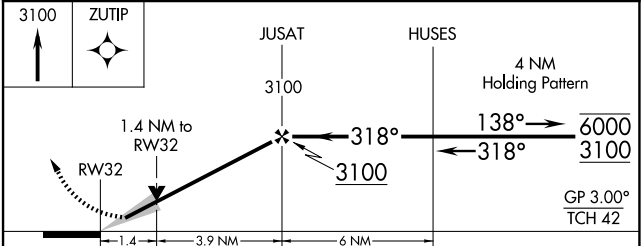
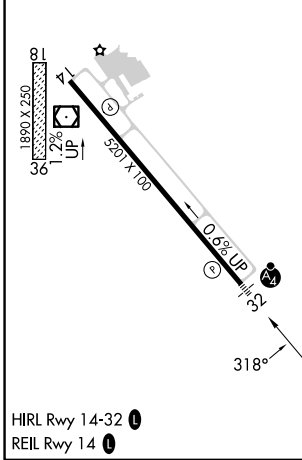
DETROIT LAKES/WETHING FLD (DTL)

RNP APCH-GPS.	MALSF	MISSED APPROACH: Climb to 3100 direct ZUTIP and hold.
<p><b>⚠</b> Circling NA to Rwy 18 and 36. Inop table does not apply to LPV.  <b>⚠</b> For uncompensated Baro-VNAV systems, LNAV/VNAV NA below -17°C or above 54°C. For inop ALS, increase LNAV/VNAV all Cats visibility to ½ SM.</p>		

AWOS-3PT <b>119.075</b>	MINNEAPOLIS CENTER <b>126.1 269.2</b>	UNICOM <b>122.8 (CTAF)</b>
----------------------------	--	-------------------------------



ELEV 1396	TDZE 1372
-----------	-----------



CATEGORY	A	B	C	D
LPV DA	1622-¾ 250 (300-¾)			
LNAV/VNAV DA	1656-¾ 284 (300-¾)			
LNAV MDA	1860-¾ 488 (500-¾)	1860-1½ 488 (500-1½)		
CIRCLING	1860-1 464 (500-1)	2080-2 684 (700-2)	2140-2½ 744 (800-2½)	

NC-1, 14 MAY 2026 to 11 JUN 2026

NC-1, 14 MAY 2026 to 11 JUN 2026