

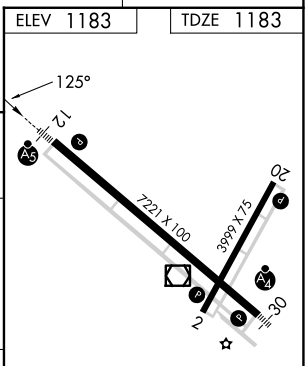
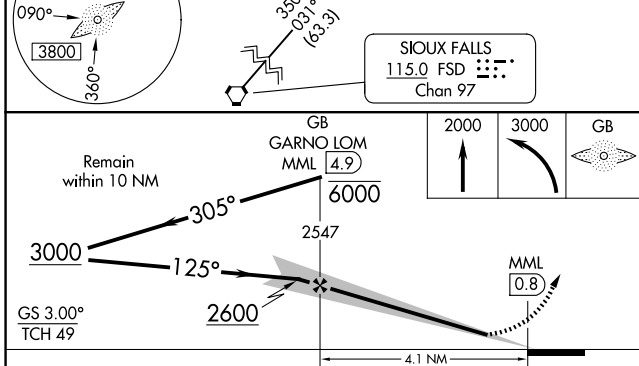
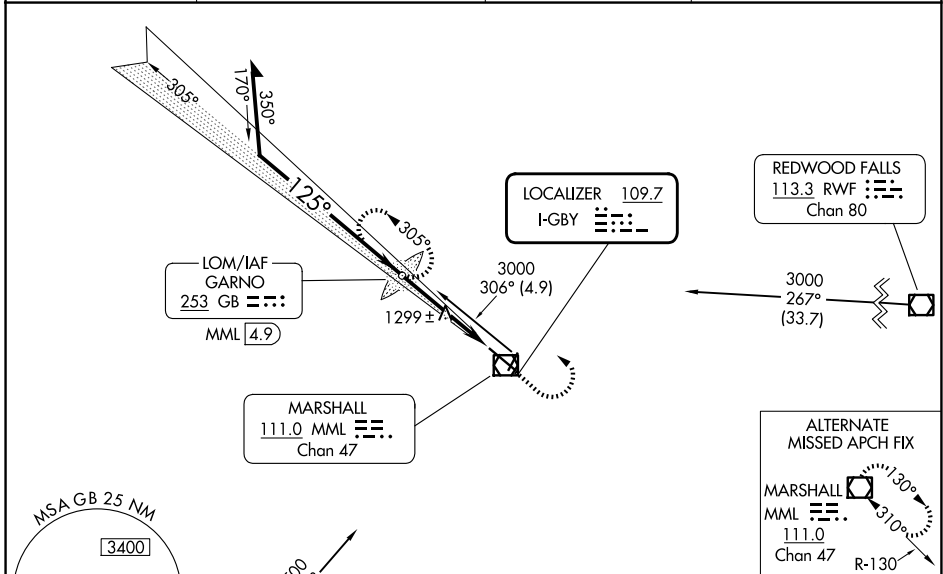
LOC I-GBY	APP CRS	Rwy Ldg	<b>7221</b>
<b>109.7</b>	<b>125°</b>	TDZE	<b>1183</b>
		Apt Elev	<b>1183</b>

# ILS or LOC RWY 12

SOUTHWEST MINNESOTA RGNL MARSHALL/RYAN FLD (MML)

ADF or DME required.	MALSR	MISSED APPROACH: Climb to 2000 then climbing left turn to 3000 direct GARNO LOM/ MML 4.9 DME and hold.
<p><b>NA</b> When local altimeter setting not received, use Tracy Muni altimeter setting and increase ILS DA to 1441 feet and all MDA 60 feet, S-LOC Cat C/D visibility 1/8 SM and Circling visibility Cat C/D 1/4 SM. Inop table does not apply. For inop ALS increase S-LOC 12 all Cats visibility to 1 SM. Inop table does not apply when using Tracy Muni altimeter setting. For inop ALS when using Tracy Muni altimeter setting, increase S-LOC 12 Cat A/B visibility to 1 SM.</p>		

AWOS-3PT <b>120.150</b>	MINNEAPOLIS CENTER <b>127.1 290.2</b>	GCO <b>121.725</b>	UNICOM <b>122.8 (CTAF) 0</b>
----------------------------	--	-----------------------	---------------------------------



	ELEV 1183 TDZE 1183			
CATEGORY	A	B	C	D
S-ILS 12	1383-1/2 200 (200-1/2)			
S-LOC 12	1560-1/2 377 (400-1/2)	1560-5/8 377 (400-5/8)		
CIRCLING	1640-1 457 (500-1)	1820-1 3/4 637 (700-1 3/4)	1840-2 657 (700-2)	
HIRL Rwy 12-30 REIL Rwy 2 and 20 MIRL Rwy 2-20 FAF to MAP 4.1 NM Knots: 60 90 120 150 180 Min:Sec: 4:06 2:44 2:03 1:38 1:22				

# ILS or LOC RWY 12

NC-1, 14 MAY 2026 to 11 JUN 2026

NC-1, 14 MAY 2026 to 11 JUN 2026