

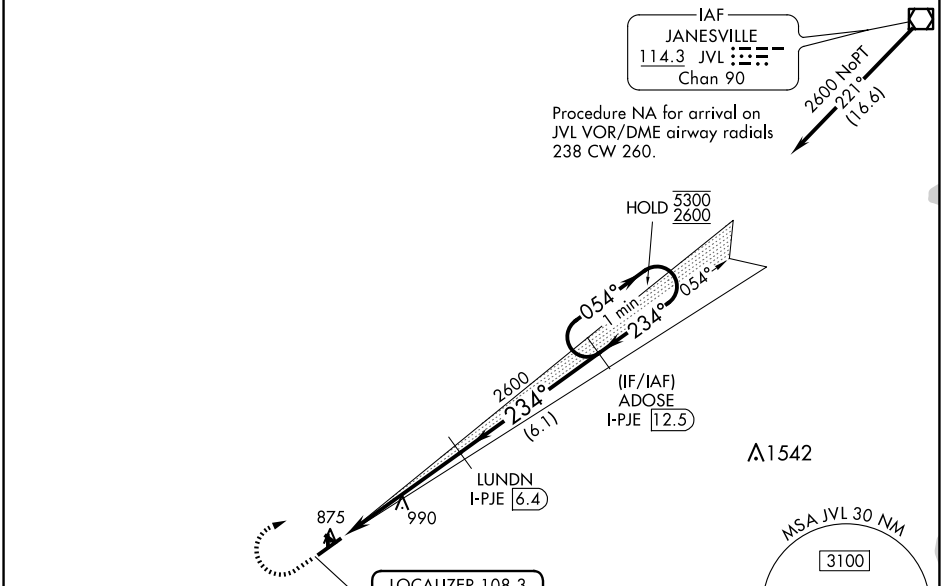
LOC/DME I-PJE <b>108.3</b> Chan 20	APP CRS <b>234°</b>	Rwy Idg TDZE Apt Elev	<b>5504</b> <b>847</b> <b>859</b>
--	------------------------	-----------------------------	---

# ILS or LOC RWY 24

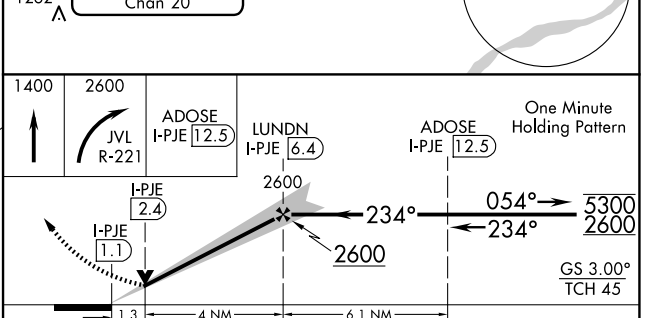
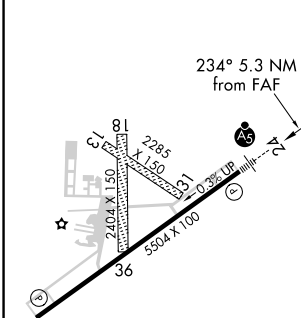
ALBERTUS (FEP)

DME required.	<p>▼ NA</p> <p>VDP NA when using Chicago/Rockford altimeter setting. Circling NA to Rwys 13, 18, 31, 36. For inop ALS when using Chicago/Rockford altimeter setting, increase S-ILS 24 all Cats visibility to 7/8 SM. When local altimeter setting not received, use Chicago/Rockford altimeter setting: increase all DA to 1114 feet; increase all MDA 80 feet and S-LOC 24 Cat C/D visibility 1/8 SM and Circling Cat C/D 1/4 SM.</p>	<p>MALSR</p>	<p>MISSED APPROACH: Climb to 1400 then climbing right turn to 2600 on JVL VOR/DME R-221 to ADOSE/I-PJE 12.5 DME and hold.</p>
---------------	---	--------------	---

AWOS-3 <b>120.525</b>	ROCKFORD APP CON <b>126.0 327.0</b>	CINC DEL <b>121.85</b>	UNICOM <b>122.8 (CTAF)</b>
--------------------------	--	---------------------------	-------------------------------



ELEV 859	TDZE 847
----------	----------



	A	B	C	D
CATEGORY				
S-ILS 24	1047-1/2		200 (200-1/2)	
S-LOC 24	1300-1/2	453 (500-1/2)	1300-7/8	453 (500-7/8)
CIRCLING	1320-1 461 (500-1)	1400-1 541 (600-1)	1440-1 1/2 581 (600-1 1/2)	1620-2 1/2 761 (800-2 1/2)

EC-3, 14 MAY 2026 to 11 JUN 2026

EC-3, 14 MAY 2026 to 11 JUN 2026