

(CLVIN3.CLVIN) 26078

CLVIN THREE DEPARTURE (RNAV)

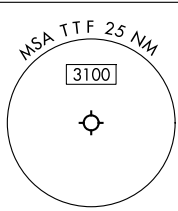
AL-5642 (FAA)

CUSTER (TTF)
MONROE, MICHIGAN

**TOP ALTITUDE:
ASSIGNED BY ATC**

RNAV 1 - DME/DME/IRU or GPS.
RADAR required.

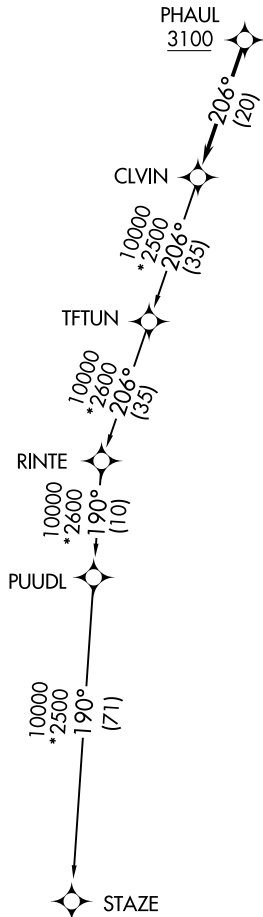
DETROIT DEP CON
134.3 284.0
AWOS-3P
119.075
CTAF
122.7



TAKEOFF MINIMUMS:
Rwys 3, 21: Standard.

NOTE: Turbojet departures at/above 10000,
maintain 280K until advised by ATC.

NOTE: Chart not to scale.



DEPARTURE ROUTE DESCRIPTION

TAKEOFF RUNWAY 3: Climb on heading 027° or as assigned by ATC, thence....

TAKEOFF RUNWAY 21: Climb on heading 208° or as assigned by ATC, thence....

....for RADAR vectors to cross PHAUL at or above 3100, then on track 206° to CLVIN, then on (transition). Maintain ATC assigned altitude, expect filed altitude 10 minutes after departure.

STAZE TRANSITION (CLVIN3.STAZE):

EC-1, 14 MAY 2026 to 11 JUN 2026

EC-1, 14 MAY 2026 to 11 JUN 2026

CLVIN THREE DEPARTURE (RNAV)

(CLVIN3.CLVIN) 16MAY24

MONROE, MICHIGAN
CUSTER (TTF)