

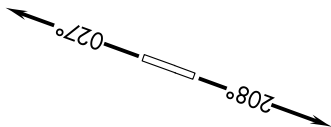
EC-1, 14 MAY 2026 to 11 JUN 2026

EC-1, 14 MAY 2026 to 11 JUN 2026

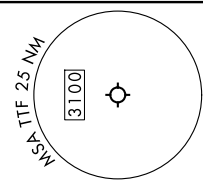
DETROIT DEP CON
134.3 284.0
AWOS-3P
119.075
CTAF
122.7

**TOP ALTITUDE:
ASSIGNED BY ATC**

RNAV-1 DME/DME/IRU or GPS.
RADAR required.



TAKEOFF MINIMUMS:
Rwys 3, 21: Standard.



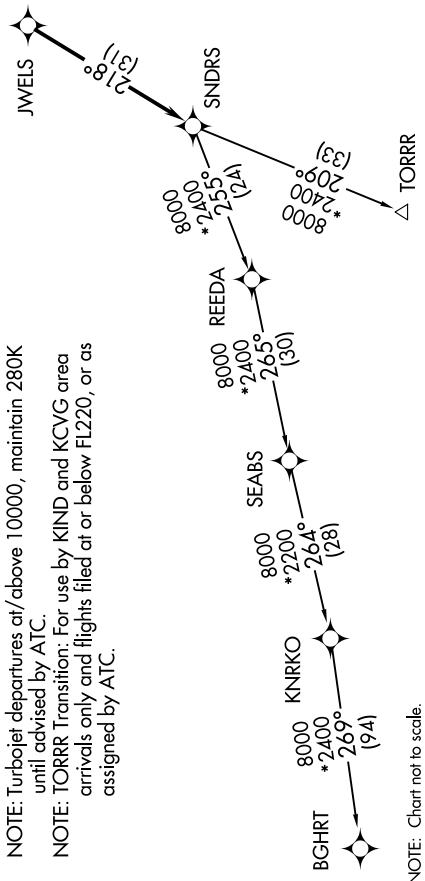
DEPARTURE ROUTE DESCRIPTION

TAKEOFF RUNWAY 3: Climb on heading 027° or as assigned by ATC, thence....
TAKEOFF RUNWAY 21: Climb on heading 208° or as assigned by ATC, thence....

....for RADAR vectors to JWELS, then on track 218° to SNDRS, then on (transition). Maintain ATC assigned altitude, expect filed altitude 10 minutes after departure.

BGHR T TRANSITION (SNDRS3.BGHR T):
TORR T TRANSITION (SNDRS3.TORR T):

NOTE: Turbojet departures at/above 10000, maintain 280K until advised by ATC.
NOTE: TORR T Transition: For use by KIND and KCVG area arrivals only and flights filed at or below FL220, or as assigned by ATC.



NOTE: Chart not to scale.